

ARTLINK

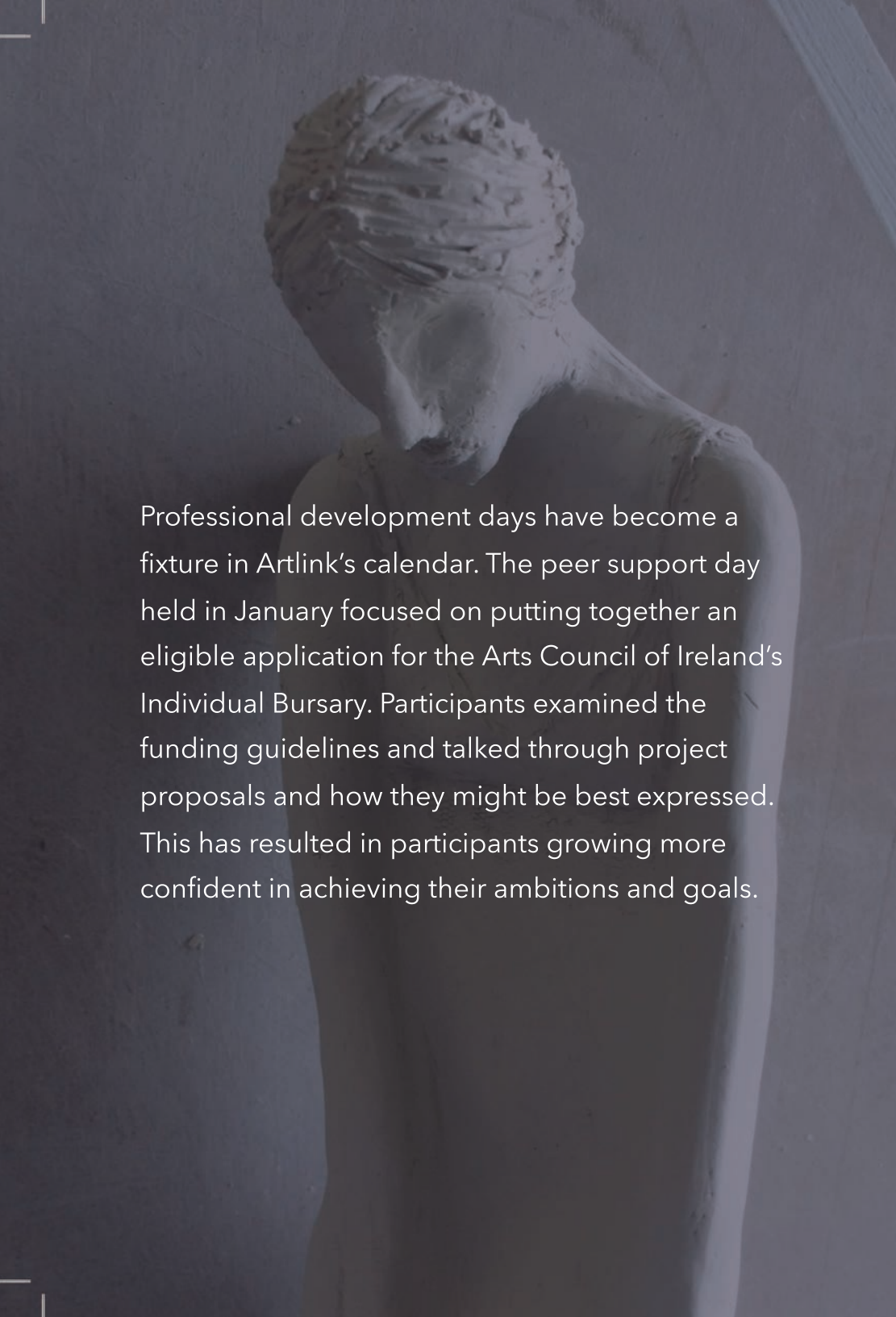
ACTIVITIES 2017

PROGRAMME REPORT



ARTLINK

Artlink is an artist led visual arts organisation, founded in 1992, currently based in the breathtaking cliff top location of Fort Dunree, Inishowen, County Donegal. Artlink supports the ambitions and profile of local, national and international artists by providing a platform for the realisation of innovative visual art projects. Through a programme of residencies, exhibitions and workshops, inspired by this stunning and historic coastal context, Artlink is helping build a strong, sustainable culture in the region. Artlink receives financial support from The Arts Council and Donegal County Council.



Professional development days have become a fixture in Artlink's calendar. The peer support day held in January focused on putting together an eligible application for the Arts Council of Ireland's Individual Bursary. Participants examined the funding guidelines and talked through project proposals and how they might be best expressed. This has resulted in participants growing more confident in achieving their ambitions and goals.

ACTIVITIES & EVENTS

Peer Support Day

17th January

Artlink Studios

In response to interest expressed by members and studio artists, Artlink instigated the second in a series of clothed model life drawing days which took place once a month throughout the year.



Drawing Days Saldanha Suite





EXHIBITIONS

CREDO

JOHN MCCARRON

SALDANHA SUITE

25th - 31st January

Credo was the first in a series of solo exhibitions by Artlink members, staged throughout 2017, part of Artlink's professional development programme which aims to support and promote the work of the membership.

Credo, literally "I believe" in Latin, was originally a statement of religious belief. Today the meaning of credo is broader, signifying any system of principals that guide a person or group.

John McCarron is inviting the viewer to think about what triggers a meaningful visual connection between symbol and belief, be it religion, luck or UFOs". He employs sculpture, painted panels and cubes as "building blocks of belief" with painted symbols as his backdrop.

Based in Buncrana, John is a sculptor and painter. He studied Art & Design and Fine Art at Northwest Regional College and has taken part in group shows at Artlink, CCA Derry and in other venues in the North West. John takes much of his inspiration from early Irish, Celtic and modern art.



The background image shows an art gallery installation. On the white walls, four square paintings are displayed in a row. The first painting from the left depicts a dark, wooded path. The second shows a landscape with a body of water and a sunset or sunrise. The third features a bright, possibly rainy scene with a bridge or structure. The fourth shows two figures walking on a beach. On the floor, which is made of light-colored wood, there are two sculptures. One is a tall, thin, branching structure made of sticks or branches, with a small yellow object at its base. The other is a long, dark, curved object, possibly a piece of driftwood, lying on a patch of white material on the floor, with small tufts of grass or reeds placed around it.

EXHIBITIONS

WILD ATLANTIC WAY

VARIOUS ARTISTS

THE ALLEY THEATRE, STRABANE

17th February - 17th March

A collaborative project between
Artlink and Bishop St. Studios, Derry



WORKSHOPS

SOAP MAKING

Artlink studio holder Jacqui Devenney Reed used locally found ingredients along with her herbal expertise to deliver workshops in creating soaps with fortifying benefits.

Facilitated at The Art Surgery,
Buncrana

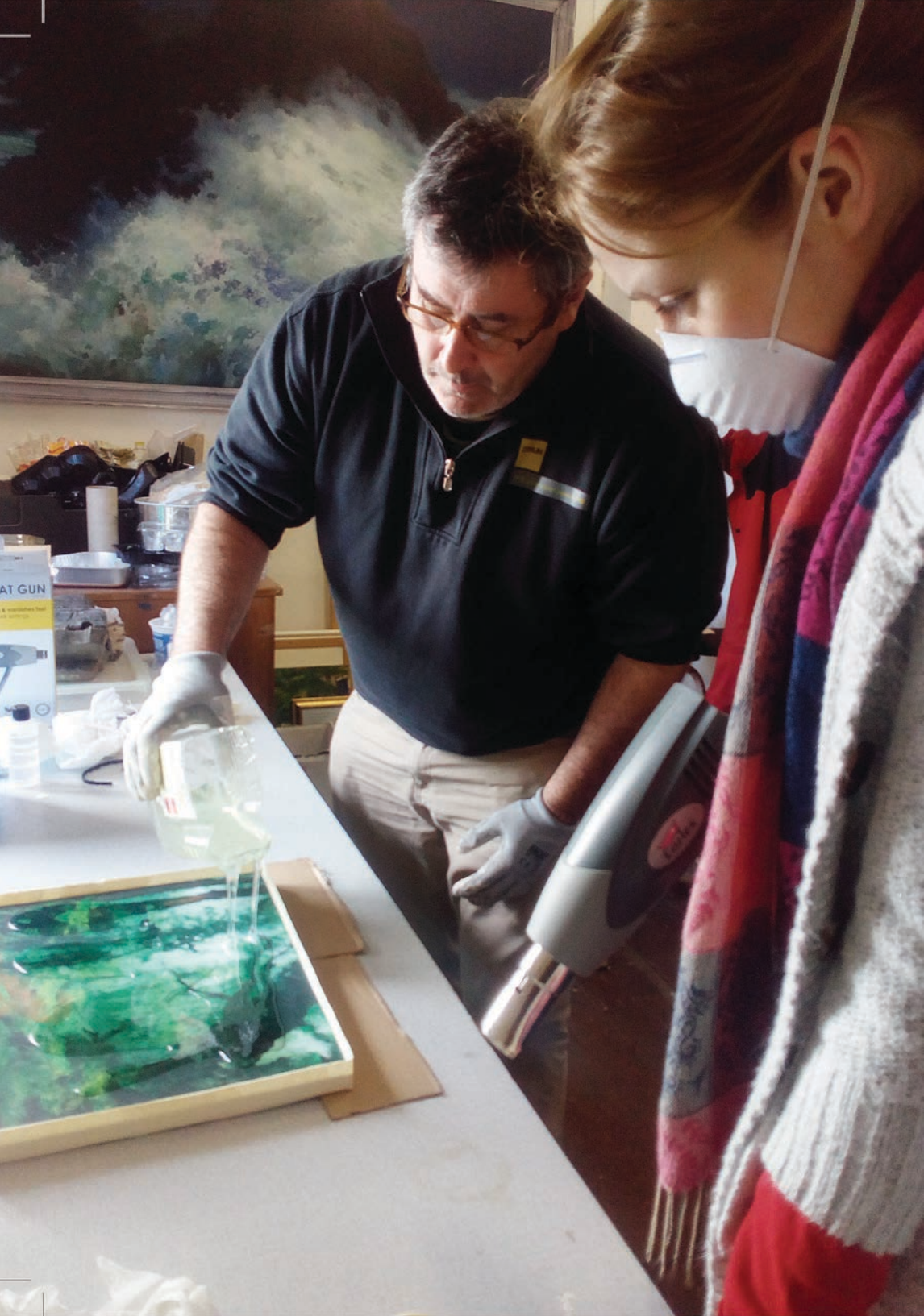
25th February

GLASS

A series of short workshops led by Patricia Spokes teaching the participants about, full fuse, tac fuse and slumping glass. Participants worked with clear glass, dichroic glass, stringers and frit to create individual pieces that were fired in the Artlink glass kiln.

Artlink Workspace

April - September



CASTING IN RESIN

Artist Kevin McLaughlin led a workshop on casting with epoxy resin. Participants learned how to apply resin to coat existing artworks to produce vivid pieces that bring out the colour and detail of the original work. Participants also learned how to encapsulate objects. Kevin gave an in-depth explanation of different types of resin and covered health and safety issues .

Artlink Workspace

1st March

An abstract painting with a dark, moody palette of blues, greys, and reds. The brushstrokes are visible and expressive, creating a sense of movement and depth. The overall composition is layered and textured.

EXHIBITIONS

PERSPECTIVES

ON EMPATHY

SINEAD SMYTH

SALDANHA SUITE

20th - 25th February

This was the second in a series of solo exhibitions by Artlink members. Sinead Smyth captures an intensity of colour and energy which she sees in the people and landscapes she paints. She is largely self-taught, painting and drawing since childhood, and has spent time studying and working with several professional artists. Many of these landscapes are painted on site in various locations around Inishowen.

Sinead Smyth has been organising and facilitating arts related projects for 18 years and has worked on several collaborative arts projects on both sides of the border, including the City of Culture/Thames Festival 'Rivers of the World' Project. She has exhibited in Ireland, Northern Ireland and Europe.



EXHIBITIONS

OBJECTITURE

KEVIN McLAUGHLIN

SALDANHA SUITE

22nd March - 29th March





This was the third in a series of solo exhibitions in 2017 for Artlink Members. Objectecture brings together sculptural works that showcase for the first time Kevin McLaughlin's long term engagement with assemblage, constructions and found objects. This body of work seeks to draw on and explore overlooked aspects of non-typical sculptural materials. He employs a breadth of materials - wood, stone, metal, bronze, plaster and found objects - readily available in Inishowen, on its beaches, along its boreens and roadsides, in its fields and boglands and its abandoned rural buildings. There is an authentic engagement with the materials that taps in to what is compelling in their nature.

He is interested in the extreme cultural juxtaposition between certain aspects of the landscape of the northwest of Ireland and certain principles of materiality in contemporary sculpture. With its mountainous undulating coastline that is constantly being formed and reformed by the omnipresent power of the north Atlantic Ocean, it is a landscape that is undeniably sculptural in its topography and fundamental essence.

Past projects include solo and group shows with the Earagail Arts Festival and the Derry City of Culture 2013 visual arts programme and a driftwood mandala installed and immolated at Burning Man in 2006.

OUTREACH EVENTS

Pushkin Trust Workshops

**Barronscourt, Newtonstewart &
Drumfad N.S. Fanad**

30th March - 3rd April

Following on from previous years Artlink was again invited to facilitate workshops for the Pushkin Trust. The theme for 2017 was the 'Floodtide in the heart'. Artists Sinead Walsh and Rebecca Strain facilitated a workshop with groups of school children from two primary schools in Northern Ireland. Each group was made up of half from each school to promote integration.

The children lay down on large sheets of paper to draw a silhouette of their bodies that they then painted white to represent the tide. They thought about all of the emotions they feel and how they express them. In a group discussion the children decided which emotions could be seen outwardly which they placed on the sand and which emotions could be concealed and they placed these in the sea. Some emotions were on the tide or both seen and hidden. The resulting seascapes were then taken back to school to be displayed.

Drumfad National School invited Artlink to deliver a day long workshop at their school. They wanted to work with fabric so the artists adjusted the session to suit. The children made a weaving frame and wove recycled fabric to create a seascape. In the morning they created backgrounds on fabric and paper using marbling. In the afternoon they examined the abstract marbled pieces to identify emotional creatures which they illustrated and cut out. They completed the weaving and through a lengthy discussion placed the expressive creature in the deep sea or on the crest of the wave according to how they felt these emotions were expressed.

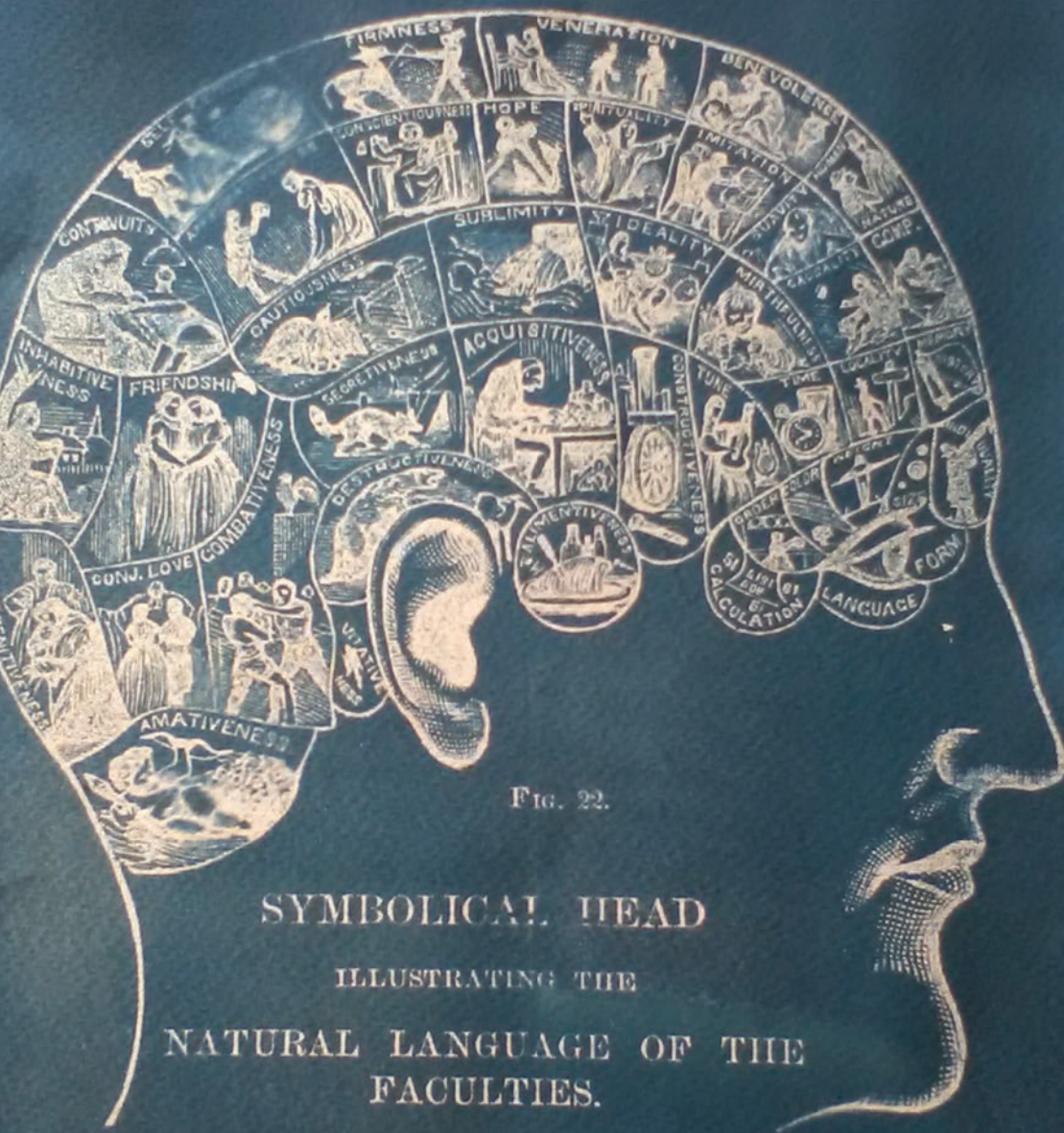
SITE PROJECTS

AMACH ANSEO

AT THE POTTING SHED

In Summer 2017 studio artist Rebecca Strain launched the idea for a community garden at Feel Good Fortnight in Buncrana with a 'plant a seed' activity. The event recruited enough interest to begin working on a community garden. The Potting Shed, including the living herbarium, by Christine Mackey sited at Artlink had been underused in recent years and was the ideal space to begin this venture. A series of workshops run by local experts in wildlife and horticulture, funded by Local Agenda 21 helped the group to analysis and assess the current state of the garden and make plans to activate the space.





WORKSHOPS

CYANOTYPE

A practical, hands-on workshop led by Martha McCulloch, where participants learned how to mix cyanotype chemicals, coat paper and expose using the sun to make their own cyanotype prints

Artlink Workspace

14th June

RESIDENCIES

Litten Nystrøm : [Iceland]

Artist's Talk & Workshop

Artlink Studios

Litten Nystrøm is from Aarhus, Denmark and since 2011 has been living and working in Seyoisfjörour, Iceland. She was the first of four artists who took part in Artlink's 2017 Residency Programme. In her proposal for the residency she wrote about a temporal landscape. Just as a geography of space contains both natural features and features created by human beings so people live in a temporal landscape that contains natural, cyclical features (day/night or the return of the seasons) and features created by human-imposed systems, such as the 'working day', the 'weekend', domestic time or work time, private time or public time.

Fort Dunree became an inspiring location to develop these ideas, allowing Litten to explore the physical and historical properties of this particular place and examine the transforming abilities and limitations of memory.

On site the artist researched how the current condition of the fort and found material (physical residue, found pigment and dust from the site) combined with light-sensitivity, could serve as a direct document, and physical embodiment of time. An ongoing preoccupation of Litten's is the search for a conceptual way of recording walks. During her time in Ireland she extended this practice to work with a Hectograph. By means of this old duplication technique, details from walks around the fort area accumulated on the continuing pages of a series of artist's books. At Fort Dunree a large spectrum of colours, applied at different time periods, cover the interiors of buildings. Litten used these to create multicoloured powders containing layers of time, historical relics, signs of use and life. These found pigments became the medium for a series of works based on the interiors from which the pigments originate.

Litten has exhibited widely in Scandinavia, as well as managing an artist's residency program in East Iceland and working on art projects in rural areas as part of artists' group RoShamBo.

Artist Talk
Litten Nystrøm
10th May

Litten presented her work and discussed the artist community in the small town of Seydisfjordur in East Iceland where she lives. She also demonstrated how to make and print using a Hectograph. A hectograph is a smooth piece of gelatine used to make multiple prints off a single master sheet. Originally it was used in the early 1900's as a means of producing multiple copies.




Niamh McCann is an Irish artist living and working in Dublin. She was one of the artists selected to take part in Artlink's Artist Residency Programme in 2017. A graduate of Chelsea College of Art & Design, London, Niamh has exhibited extensively in Europe, Ireland and in the USA. "I think of myself largely as a landscape artist - of the constructed landscape, the stuff we make, the stuff we consume". With the rural landscape itself commonly conceived of as unfabricated or unconstructed, that idea of the constructed landscape is particularly striking. Niamh has spoken of her art practice constantly engaging with the notion of a specific circular narrative; how we shape our environment and how it shapes us in return. The primary context of Artlink Fort Dunree as a site is of course the historic resonance of the location and the beauty of the surrounding habitat. As a decommissioned military fort, the site contains what could be described as the visual debris of history. The Fort Dunree site sees the display of redundant military equipment and infrastructure, the symbolic language of nation and military in the visual culture and design of the location. The artist worked with the histories, stories and resonances within both these historical and natural landscapes by engaging with them through a precise and defined visual language - the symbolic language of flag-making. She explored the Fort Dunree archives and museum, local folklore and indigenous landscape, to compile a potential list of symbols for use on a flag which is both functional and beautiful: "a functioning object, to represent and state intent within the local community, a flag to join, not divide(which)would exist as standalone artwork, capable of being sited and integrated into the fabric of and function of the location"

RESIDENCIES

Niamh McCann : [Ireland]

Artist's Talk & Workshop

Artlink Studios & Saldanha Suite

A photograph of a flag flying on a tall pole atop a rocky hill. The foreground is filled with wildflowers and grasses. The sky is overcast and grey.

Artist Talk
Niamh McCann
7th June

Artist in Residence Niamh McCann discussed her current research into the symbolic language of flag-making and her proposal for her residency at Artlink.

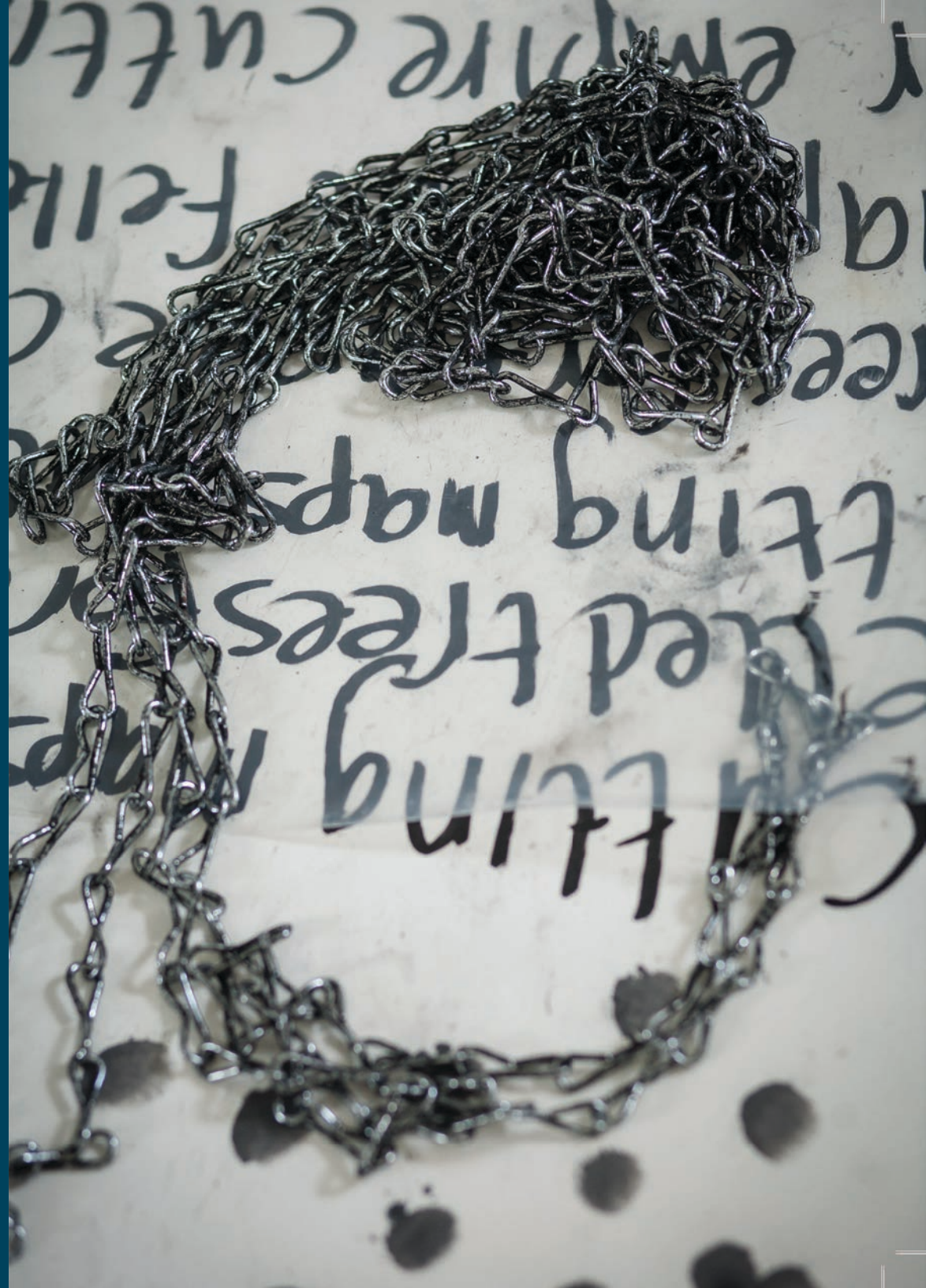
EXHIBITIONS


WE ARE ALL I KNOW IS THERE

CUISLÍ

SALDANHA SUITE

22nd July



A dark, moody photograph of a metal bowl containing cutlery, with a chain draped around it on a wooden surface. The bowl is filled with various pieces of cutlery, including knives and forks. A thick metal chain is draped around the bowl and across the wooden surface in the foreground. The lighting is low, creating strong highlights and deep shadows.

'We are all I know is there' was a performance by Cuislí, a collaboration between Bernadette Hopkins, Le Ái and Aodán McCardle. Translated from Irish, Cuislí means heartbeat, pulses and is a term of endearment. Cuislí's artistic practices come together in a shared experience of border in the Northern Ireland context and as a dis/place/ment. Current practice investigates the 'Structuring Structures' that define, confine and dictate people's communication, development and self awareness. Improvisation and Collaboration as actions within the performance work, investigate the self and the other, disrupt the ego and remain open.

RESIDENCIES

Becca Albee : [USA]

Artist's Talk & Workshop

Artlink Studios & Saldanha Suite

The projects of Artlink's third artist in residence in 2017 have been generated by a curiosity about tracing history, whether that be drawn from a personal archive or in the public sphere, looking for a tall tale to examine, or a cultural movement, or a particular aesthetic, or a collection of personal artefacts. Her practice uses physical materials as the means with which to research stories, by mining for artefacts, whether those physical materials be old photographic negatives from a family, or newspapers, or published books, or the personal items carried in pockets or purses. Albee investigates the mechanisms of history by using such material as the original subject material for an art practice, through processes such as photographing the material, then scanning, printing and rephotographing, staging setups in the studio. These photographs are either the springboard for the project or become part of the final work, recreating artefacts to reconstruct stories.

Becca Albee's work includes photography, sculpture, video, and performance. She received her MFA from the University of North Carolina at Chapel Hill, a BA from The Evergreen State College in Olympia, Washington, and attended Skowhegan School of Painting and Sculpture. Her work has recently been written about in Artforum, Aperture, The New York Times, and Bomb. Recent residencies and fellowships include Yaddo, Irish Museum of Modern Art and MacDowell Colony. She is currently an Associate Professor of Art at The City College of New York, CUNY.



Artist Talk
Becca Albee
3rd July 2017

Becca Albee talked about her colour photo-based project expanding on the research component of her work. She discussed the initial inspiration for the project, a room-sized colour wheel mural by artist, psychoanalyst, and colour theorist Hilaire Hiler.

The mural, The Prismatarium, was completed in 1939 and is located in a former "ladies' lounge" in The Aquatic Bathhouse in San Francisco. She showed photographs taken in Dublin, San Francisco, and New York that expand on ideas of colour theories and therapies, and the intersections of gender associations in visual culture, representation and photography.

EXHIBITIONS

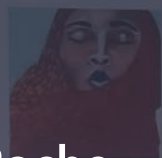
MANIFOLD

MEMBERS' SHOW

Curated by Stephen Roche

SALDANHA SUITE

11th - 31st August



MARYJOHNSON: PATRICKCLAFFERTY: BENHOLMES:
MARKCULLEN: DEIRDREDOHERTY: JACQUIDEVENNEYREID:
HILARYMORTON: JANETHOY: EMMAHIRSK:
VERONICABUCHANAN: MARYMCCLELLAND:
SEANO'RIORDAN: AILBHEHINES: CHRISBORLAND:
JACINTACALLAGHAN: JOHNMcCARRON:
TERRYTEDSTONE: SINEADSMYTH: CATHERINEELLIS:
HANNAHTUCKER: BERNADETTEHOPKINS: AMYGUILFOYLE:
JOHNBLACK: STEVELEWIS: MYRIANROMMERS:
GERALDINETIMLIN: PATRICIASPOKES: CAROLINEKUYPER:
ANNELOVEDAY: CAROLINEMURPHY: AODANMCCARDLE:



Artlink's 3rd annual members show was curated by Stephan Roche, former curator and board member of the 126 Gallery, Galway. The diverse range of submissions reflected on the theme of Manifold. The exhibition included sculpture, photography, painting, assemblage, performance and mixed media.

RESIDENCIES

Tamsin Snow : [Ireland]

Artist's Talk & Workshop

Artlink Studios & Saldanha Suite

Tamsin Snow explores the relationship between art, architecture and design, constructing large scale built environments, virtual reality sequences and CGI animations in order to raise questions about the political and ideological underpinnings of architecture and social spaces. Her proposal for the residency at Fort Dunree was to undertake an enquiry into the architecture of Fort Dunree, the notion of the Fort or Bastion and the legacies of such models in modernist architecture.

At Fort Dunree Tamsin focussed her research on the topography and architecture of the Napoleonic fort. She began a process of digitally mapping the fort, researching new technologies such as LIDAR (Light Imaging Detection and Ranging), a remote sensing technology that uses laser scanning to collect height and elevation data. She collated data from historic and recent maps of the fort and surrounding areas and with this she experimented with new technologies such as photogrammetry and attempted to build digital models of objects from the site which she aims to include in a new CGI animation.

Tamsin Snow lives and works in Dublin and London. She completed a BA in Fine Art at Goldsmiths University, London (2008) and an MA in Sculpture at the Royal College of Art, London (2012). Upcoming exhibitions include Cross Sections, Curated by Basak Senova, Kunsthalle Exnergasse, Vienna (2018) and Showroom, Block 336, London (2018). She was the recipient of the HIAP/ TBG+S Residency Exchange 2017.



Artist Talk
Tamsin Snow
13th September

Tamsin Snow gave a talk on how she constructs large-scale environments, CGI video's and Virtual reality sequences to raise questions about the politics and ideology inherent in the design of social spaces.



EXHIBITIONS

WHAT LEAVES WHAT'S LEFT BEHIND

JANET HOY

SALDANHA SUITE

3rd - 24th September

This was the fourth in a series of solo exhibitions in 2017 for Artlink members to exhibit and promote new work. For the past few years Janet Hoy has been considering forms of cultural expression and identity, and how art can help build communities and forge cultural and social cohesion. Her original source of inspiration for this body of work was a tree festooned with a curious array of cast off clothes, toys and rags, encountered on a desolate stretch of road in County Mayo. She learned that such "rag trees" are sites of pre-Christian votive offering, embodying the timeless, instinctive impulse we all share to externalise our thoughts, feelings, fears and wishes, which can be seen as primitive definition of art.

At a time when the art market has warped our understanding of art's place in society, this encounter prompted Janet to consider the function of art as a shared experience, with a value beyond the financial.

Experimenting with a range of media - from pencil drawing to installation, from video to print - the artist explored this human impulse for creativity in times of crisis or intense emotion, as a means of provoking empathy and understanding in the viewer.

As an extension of this exhibition, local artists were invited to join Janet in a closing event, which was titled "Message In a Bottle".





EXHIBITIONS SUNDANCE

MARY McCLELLAND

SALDANHA SUITE

14th - 23rd October

Mary McClelland is a Donegal based artist and Artlink studio holder in 2017. She creates images and objects in an attempt to capture the struggles, pains, joys, and beauties of human existence. Whether through a sculpture, installation, photo or video her objective is the same. She aims to express the sacred in the everyday, in a contemporary way, based on her own faith journeys. "Sundance", based on the Miracle of the Sun in Fatima, showcased photographs and testimonies of the witnesses, religious artefacts and original artwork produced by the artist.

Mary McClelland graduated in Visual arts practice in 2016 from IADT, Dunlaoghaire, Co. Dublin.



The rest of the third world is
Published by the Vatican

The third part of the secret news
July 1987

I write in obedience to you, my
through his Excellency the Bishop
Mother and mine.

After the two parts which I have
Lady and a little above, we saw a
left hand, flashing, it gave out the
set the world on fire, but they did
that Our Lady radiated towards
earth with his right hand, the Ad
Penance, Penance? And we saw
something similar to how people
front of it a Bishop dressed in W
the Holy Father? Other Bishops,
going up a steep mountain, at
rough-hewn trunk as of a cork
the Holy Father passed through
trembling with halting step, still
for the souls of the corpses he
the mountain, on his knees at the
group of soldiers who find bullets
way there died one after another
women Belgians, and various in
positions. Beneath the two arms
with a crystal apparatus in his
blood of the Martyrs and with it
their way to God.



EXHIBITIONS

RED

SALDANHA SUITE

6th - 19th December

A group exhibition based on the theme "RED" Testing the ground for networking without social media.

Installation photographs, events photography
and documentation of artworks by:
Martha McCulloch, Jacqui Devenney Reid, Janet Hoy, Kevin McLaughlin,
Rebecca Strain and Harry Kerr. Publication Design by Harry Kerr.

