

**ARTLINK**

# **PROGRAMME REPORT**

**ACTIVITIES 2022**





# ARTLINK

This year was one like no other; perhaps our busiest ever and yet the year with the greatest loss. While we were busy creating a community grieving space through Compassionate Culture Network with the Irish Hospice Foundation we found out that our dear colleague Harry Kerr was terminally ill. In creating a support network for others we soon found that it was us who now needed support. Tragically and suddenly in May 2022 Harry passed away. With over 30 years experience in the creative sector: working variously as an artist/photographer, tutor, graphic and exhibition designer and technician, he was highly skilled in photography, digital media, film making, and website design. At Artlink Harry was responsible for photography, videography, web development, exhibition installation and making sure standards never slipped. To honour his huge contribution to our lives an event attended by hundreds was held at Fort Dunree with a procession to the beach where his ashes were shot into the cosmos with fireworks.

Despite our loss, in 2022 Artlink continued with its successful programme of artist residencies. With Covid restrictions in place in 2020 and 2021 the residency artists from those years had to postpone their visit till 2022, so this year the residency programme was particularly busy. International residencies by artists Jessica Auer [Iceland], Itamar Gov [Israel/Berlin], Asle Lauveland Pettersen [Norway], and Irish artists Maurice Doherty, Shane Finan and Aine McBride were undertaken.

In addition to these residencies Artlink continued to develop partnerships with other organisations to build a programme of well supported international exchange residencies so that Donegal artists would also have opportunities to develop their practice and at the same time be ambassadors for Donegal. Through our partnership with Street Level Photoworks in Glasgow, Donegal artist Moira McIver spent one month in Glasgow and is working towards a solo exhibition at Street Level's gallery in 2023. Three artists from Newfoundland; Kym Greeley, Michael Flaherty and Susan Furneaux took part in the International Atlantic Residency Exchange with Eastern Edge Gallery in St John's, and Donegal based artists Geraldine Timlin and Pedro Rebelo spent one month in Newfoundland.

The exhibitions programme is an essential element of Artlink's artist development activities, supporting artists at all stages in their careers. As well as exhibitions in the Saldanha Gallery by Irish artists Brigid Mulligan, Aodan McCardle and Louise Spokes the programme this year included a site specific piece by Roberto Uribe Castro and the first showing of *Volver de la Guerra*, a significant new body of work – paintings, drawings, sculptures and videos – by Colombian artist Mario Vélez, curated by Adriana Valderrama López, PhD Researcher at Ulster University. Two local artists; Michael Friel and Debroah Stockdale also showed new bodies of work in the Mezzanine Gallery at Fort Dunree. Our annual Artlink Members show *The Point of Perspective* was curated by Lindsey Merlihan of 126 Gallery and showed the work of 40 artists from across the region and beyond.

Artlink's 2022 programme 'New Rhythm' was intended to extend beyond Fort Dunree to encompass the town of Buncrana. Our aim was to make art in the area more visible and more physically accessible to enhance the cultural experience of local people and visitors alike.

We also saw the need to see people enjoying the outdoor resources around them and using the arts to enhance their experiences, thus encouraging the regeneration of their well-being and a sense of community in the wake of the coronavirus pandemic. Working with Donegal County Council we hosted the first annual Art in the Park outdoor exhibition at Swan Park which saw newly commissioned work by four artists Rosalind Lowry, Mark Cullen, John McCarron and Kevin Harkin installed in the park for the month of February.

Stories of Change is a collective of strategic partners, educators, photographers, chefs, creative folk and climate ambassadors who bring communities together to showcase and celebrate local solutions to the climate crisis. The project, led by Essentially Eco in partnership with Wild Strands, involved four counties; Donegal, Kerry, Clare, Galway with five identified partners; BurrenBeo Trust, Leave No Trace, Climate Ambassadors, Artlink, and SeaSynergy. Artlink hosted an exhibition at St Mary Hall in Buncrana which included talks by experts including artist in residence Shane Finan and a community feast.

The Potting Shed, an open air creative space developed by Irish artist Christine Mackey in 2013 has since evolved into a thriving community garden and educational facility to encourage sustainable living that encompasses holistic health and wellbeing. Building on this in 2022 Artlink began to work with local Home Schooling families who meet for a weekly Art and Garden Club, learning through working with the garden as a resource.

Additionally in 2022 we received mentoring from Amicitia through the Social Enterprise Regeneration Programme, organised by Inishowen Development Partnership. This led to the successful funding of a Feasibility Study for an Inishowen Art Festival in partnership with Amicitia, ConsortiaCo and Samhlaigh Collective with curator Keith Whittle as project mentor. This Arts Council of Ireland Capacity Building Fund will continue into 2023 with the final report expected in Summer 2023.









# PUBLIC EVENTS

## ART IN THE PARK

**8TH-28TH FEBRUARY**

As part of a move to present work in the open, in part to engage with a wider audience, Artlink staged its first temporary exhibition in Swan Park, Buncrana. A much-loved public space since the Victorian times, Swan Park was bequeathed to the people of Buncrana by local philanthropist Harry Swan.

The exhibition opened to coincide with Imbolc, marking the beginning of spring, when the park was just emerging from deep winter. Importantly, we were also emerging from the coronavirus pandemic and wanted to nurture a new rhythm, a new way of working, a new routine, informed by the Celtic calendar, to reconnect us with natural rhythms, the seasons, the tides.

*Art in the Park* included works by four artists who were invited to respond the history of the park and the legacy of Harry Swan.



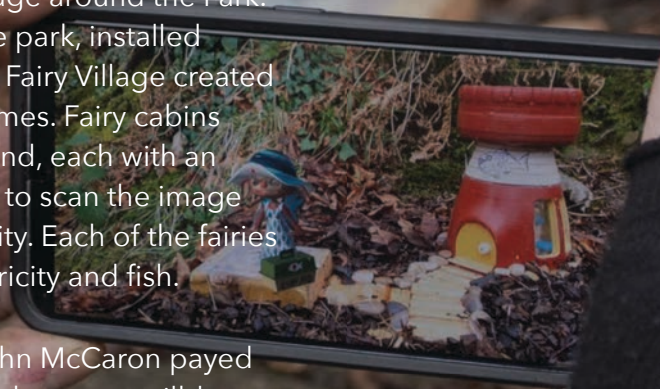
Só an uisce (Luxury of water) by Kevin Harkin was a globe constructed from pvc water pipe and recycled deluxe sink fitting with a solar powered fountain unit. Water is something we take for granted and often complain about here. In other parts of the world it's like liquid gold, so scarce; lives are lost, wars have been started over it. The other extreme is devastating floods. Kevin was born and grew up on the banks of the river Faughan so he has witnessed what the power of water can do; 'Banker Floods' carrying away family livestock, destroying fencing, entering homes unwelcome, out of control and bringing floods of tears.

Mark Cullen created an Interactive Fairy Village around the Park. Fairy houses have long been a feature of the park, installed discretely and anonymously. The Interactive Fairy Village created an engaging development on these tiny homes. Fairy cabins were integrated seamlessly with the woodland, each with an image on the door. An app allowed viewers to scan the image causing a fairy to appear in augmented reality. Each of the fairies represented the themes of river, trees, electricity and fish.

'Swan's Light' by artist and local historian John McCarron paid tribute to Harry Swan and his brother John who were trailblazers in establishing The Buncrana Electric Company, one of the very first power generators in Ireland to supply electricity to an urban area. The piece encompassed a transparent, illuminated pillar incorporating archive images.

Rosalind Lowry created a Swan Park Timeline using abstracted images and shapes to represent events in the history and culture of the area. The sculpture was a linear story made from vibrant blue powder coated steel to echo the local seascape and river. Along the undulating design the waves of the sea change to the river roaring to create the power Buncrana was known for. The line moves to form the shape of the path of the Crana River.

The exhibition was accompanied by two engagement events. Mark Cullen facilitated Púca Portrait, an animation workshop and John McCarron gave a historical overview, Stories of Harry Swan.







# PROJECT

## COMPASSIONATE CULTURE NETWORK

NOVEMBER 2021 - MARCH 2022

Artlink hosted open sessions in Buncrana to explore grief, death and loss through creativity, part of a national project by the Irish Hospice Foundation called Compassionate Culture Network.

We drank tea, talked, listened, cried, laughed, made handmade paper, lumen prints, cyanotypes, stone wrapping, collage, paper weaving, writing and book binding. Through conversations the group decided to design and produce a Grief Journal. This was both a way to leave a legacy and to give participants a way of concluding the project.

The intention was to compile useful tools for coping with grief in its widest sense. Participants designed pages to share activities, quotes, images and reflections to help someone process loss. Collectively we created a book that people can draw and write in, add images to and keep with them as they grieve. Books by Keri Smith, Meera Lee Patel, Maria Kalman served as inspiration for the approach. While we continued working together in person we also acknowledged the many friends and colleagues who are aware of the project through online platforms. An invitation was extended to our virtual participants to submit a page.

We dedicated the book to all who participated and contributed and also to our colleague Harry Kerr.



# ENGAGEMENT

## DONEGAL VISUAL ARTISTS NETWORK

The Donegal Visual Artists Network was set up in 2021 to support artist development in County Donegal. The network is led by Artlink Fort Dunree, Regional Cultural Centre (Letterkenny), Glebe House & Gallery and An Gailearaí.

At the Launch event at The Glebe Gallery, 15th April, Visual Artists Ireland presented the results from the needs analysis work, undertaken in 2021, which explored the visual arts practice in County Donegal. This information was then used to plan and deliver a programme of professional development events for Donegal artists.

In late summer 2022 Grainne McMenamin was appointed as Project Coordinator for DVAN. Grainne has been working as a freelance artist for almost twenty years and understands the ins and outs of this way of life. Continuous professional development can be hard to fit in around juggling the actual art practice, earning a supplementary income and any other personal responsibilities.

Grainne observed a real desire for peer to peer connection on a county-wide level and for a regular, useful, enjoyable meeting opportunity. Two of the feedback points that arose from the survey and discussions were a desire for DVAN to provide an opportunity for skill-sharing and practical workshops. To this end Grainne successfully organised several artist studio visits which have given a great insight into the different approaches artists take to their practice. The events took place across the county from Ballyshannon to Gortahork to Shroove enabling wider accessibility for rural artists.



# EXHIBITION

## FRONTIER WORK

15TH JANUARY - 4TH MARCH

ANNA MARIE SAVAGE, NOEL CONNOR, JANET HOY, SUE MORRIS

In 2021-2022 Artlink commissioned Garrett Carr to curate an exhibition the subject of the British/Irish border, to be staged at the Regional Cultural Centre, Letterkenny.

Participants from the 2019 Drawn From Borders project were invited to submit a proposal to develop their work. Four artists were selected: Sue Morris, Anna Marie Savage, Noel Connor and Janet Hoy received an artist fee and received regular guidance and mentoring from the curator. As part of the programme the artists took part in a panel discussion at the RCC which was well attended by members of the public.

Anna Marie Savage: Semtex and Powdered Milk

Anna Marie Savage's work explored the partitioning of Ireland and the impact and legacy of the events that occurred during this period on communities living along the border and further afield; while also exploring the strategic placing of watchtowers the south Armagh border. Another strand of her research considered the three historical surveys of the borderland by Dougherty, Bailey and Robinson and how the boundary for an Ulster exclusion zone was drawn up.

Noel Connor: Lost Lines

"As Patrick Kavanagh said, 'We have lived in important places'. In his poem 'The Ministry of Fear' Seamus Heaney reinforced Patrick Kavanagh's declaration with his own recall of localised events and memories. It has surprised me in developing my work for Frontier Work that I now find myself recognizing such potency in re-entering the small invisibly bordered territory which I inhabited as a child and teenager".

Janet Hoy: Turf Wall

Across the summer Janet Hoy traveled the border from Warrenpoint to Lough Foyle, taking photographs of what she could see where roads cross the border. At points she was confronted by a vivid reality of a border but there were also points where there is nothing but open countryside. She transferred these images, using photo decals, onto Bord na Mona peat briquettes, 'bricks' - made from Irish land - to build her gathered perceptions of the border into a physical wall.

Sue Morris and Greg McLaughlin: Bingo Borderland

Bingo Borderland is a collaboration between Sue Morris and Greg McLaughlin, a media sociologist. They are married and have lived in Derry for six years. Sue is from London and has become increasingly interested in what she sees as 'other' places/spaces on the border and its hinterland. The proliferation of road-side vendors, used-car lots, currency exchanges, amusement arcades, filling stations etc., constitute a cross-border economy and reflect the precarious nature of life on the border.

Garrett Carr is a senior lecturer in creative writing at the Seamus Heaney Centre at Queen's, and author of *The Rule of the Land: Walking Ireland's Border* and curator of *Mapping Alternative Ulster*.





Janet May



# RESIDENCY

## SHANE FINAN

**FEBRUARY - NOVEMBER**

Shane Finan is an Irish artist, based in Leitrim. He assembles all manner of things into art. His media include electronics, painting, computer programs, film, web art, writing and interactive digital media. He collaborates with foresters, fungi, farmers, epidemiologists, ecologists, sheep, astrophysicists, and trees.

He looks at complex networks and entanglements between human and nonhuman actors, and how these networks work together. His recent works have looked at how different organisms and objects influence one another, forming “assemblages” that change and affect places and environments. His work on networks includes natural networks such as the complex systems of trees, fungi and animals, and human/ technological networks such as the internet or community centres.

Shane arrived with us at Fort Dunree in the spring of 2022 and returned on and off throughout the year, exploring this place in all seasons, making discoveries about the culture and nature of the area, the evolving nature of Artlink and the fascinating world of lichen. He had been looking at how fungi and related species in woodland areas provide a complex network under the soil that directly affects the roots and trees above. Arriving at Fort Dunree he became fascinated by the map lichen which grows abundantly here, an example of a stable symbiotic

coexistence between a fungus and algae. The research begun here is leading to new directions in his overall project.

Shane holds an MSc in Interactive Digital Media (Trinity College Dublin) and a BA in Fine Art (IT Sligo). He has received awards from The Arts Council of Ireland (2021, 2020, 2012), Wicklow Arts Office (2021), Creative Ireland Sligo (2020), Trinity College Dublin Visual and Performing Arts Fund (2019) and Culture Ireland (2018).







# ENGAGEMENT

## AMACH ANSEO

Amach Anseo was established by Rebecca Strain in 2017 and occupies The Potting Shed; a place for the propagation and fortification of creativity created by artist Christine Mackey in 2013 as part of the Resistance and Rebellion residency at Fort Dunree.

The aim of Amach Anseo is to develop a group that cultivates community and creativity through growing to encourage sustainable living, encompassing holistic health and wellbeing. In 2022 the garden group continued to meet on a weekly basis, this year exploring a planting technique called Three Sisters. For many Native American communities, three seeds - corn, beans, and squash - represent the most important crops. When planted together, the Three Sisters work together to help one another thrive. Despite nurturing, the climate in the community garden was not suited to these plants. However it was a useful learning experience and will inform future planting choices.

Early in the year Amach Anseo completed the Buncrana Miyawaki Forest planting, begun in 2021, at two more housing estates in the town: The Woods and Cornmill Avenue. In total over 400 native trees and shrubs were planted and signs were made by repurposing the signage from Art in the Park.

In August, on a field trip to Glasgow, members of Artlink Creative Team visited Urban Roots, Woodlands Community Garden and Hidden Gardens to find out more about how these community gardens were set up, how they have evolved and what programmes they run. At Urban

Roots we participated in a photography workshop that aims to document the changing seasons. Upon our return we sent seeds we had saved from our garden to continue the connection.

The home-made bench and the compost area in the garden had seen better days. With funding from Donegal ETB Amach Anseo ran a garden pallet furniture course where participants made individual projects to take home as well as replacing the furniture in the community garden. Led by Michiel Verspuij, the course was attended by seven women who had no previous experience with hand or power tools.

Next door to the community garden is the Garden of Reflection, developed as part of the Laurentic Memorial. In Autumn, through Donegal ETB, Amach Anseo ran a course to make ceramic tiles to identify the plants. Participants collected samples from the garden, researched the names and created tiles that will add interest and meaning to this special space.

Every Thursday since the Autumn 2021 a group of home schooling families visited the community garden to take part in arts, crafts and horticultural and nature activities. The children enjoyed a variety of pursuits including foraging, drawing, ceramics, seed saving and a long term project to build a friendship seat from Ecobricks.

In June Amach Anseo welcomed Donegal Women's Network for their annual Women's Wellness event at The Potting Shed. Over twenty women from across Donegal spent the day in and around the garden exploring the positive impact of green spaces on our health and wellbeing. The day was rounded off with a dip in the sea.







# ENGAGEMENT

## ATLANTIC TECHNOLOGICAL UNIVERSITY LOGO PROJECT

Thirteen animation students from Atlantic Technological University (formerly Letterkenny Institute of Technology) created cutting-edge logos that 'spin, bounce, fold, warp & transform' for a new project with Artlink Fort Dunree aimed at providing students with the real-life experience of working in a designer-client relationship.

Artlink's mission is to provide the expertise and physical resources to build a strong sustainable visual arts culture and contribute to the artistic and economic ecology of the North West of Ireland. This project enabled us to support the professional development of aspiring artists and to inject life, through animation, into our logo and branding.

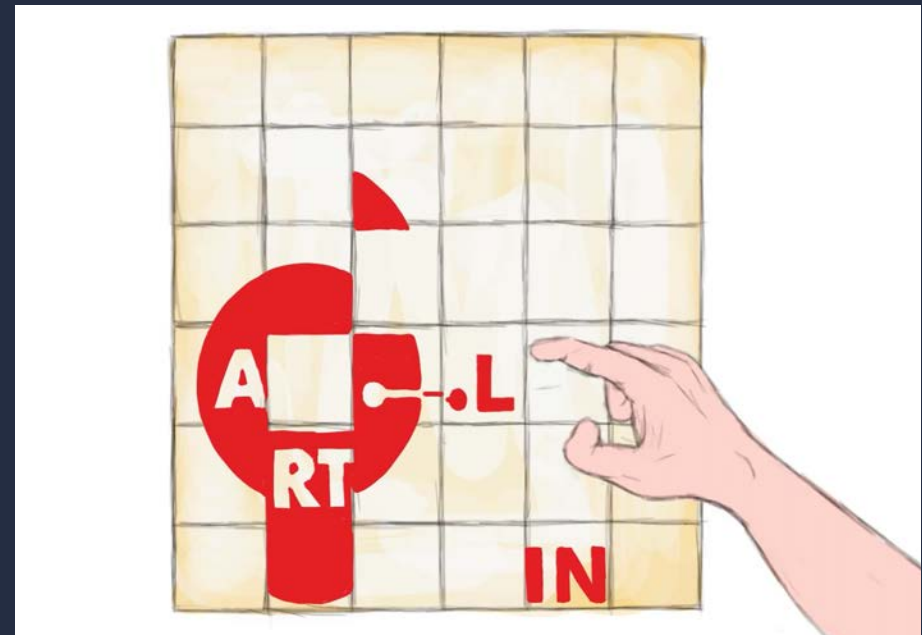
The project included site visits, client briefings, feedback and ongoing support of their tutor Mark Cullen. This project not only develops the portfolios of the students but it gives a unique vibrancy to the established Artlink identity - enhancing the brand and giving it a '21st century edge' as we target new audiences via social media, marketing videos and our website.

The ATU animation students also found the Artlink project a hugely beneficial experience, as Adrianna Whyte explained: "Working with Artlink was a great experience, we communicated well throughout the project and their feedback was really valuable to us both creatively and in helping us reach a final product they were happy with."

Atlantic Technological University student Declan Gillespie added: "Working for the client (Artlink) was a fun challenge. We had a large range of potential ideas to choose from and the feedback was always encouraging and helpful. There was a nice sense of communication which kept me excited and motivated throughout the entire project."

Artlink showcased the designs and logos of all thirteen students on our Instagram page and website at the beginning of April 2022 with a view to incorporating them into our website and films - their logos give a youthful and fresh insight into who and what Artlink is and can be.

The animation students from ATU who participated in the Artlink project were Adrianna Whyte, Caoimhe Coll, Cliona Mullane Kelly, Declan Gillespie, Elian Persival, Iva Jelavich, Jake Ochnicki, Leila Skoflek, Lydia O'Connell, Nathan Doherty, Patrick Kelly, Shane Treacy, Skyler O'Flaherty





# EXHIBITION

## FEMLENS

### DONEGAL WOMEN'S NETWORK

25TH MARCH - 10TH APRIL

The Donegal femLENS project, organised by Donegal Women's Network, was an exhibition of beautifully captured and thought provoking documentary photography projects developed by women in Donegal. Topics included: Humans and Nature, Saving Seals, Women in Farming, MICA Homeowners Stories, Childhood Freedom, Loss, Living with Intracranial hypertension, Lockdown Emergence, Stepping into the Flow and the lived experience of domestic abuse.

Through an online training program Jekaterina Saveljeva (Kate) at femLENS delivered an empowering training programme. Kate demonstrated the capabilities of smartphone cameras and instructed participants on various aspects of photography including community storytelling and the power of photographs to convey a story.

On 9th April, participants and the public came together for a workshop exploring some of the themes in the exhibition and the value of sharing skills with women to empower their voice through photography. It was

facilitated by Danielle Bonner of Donegal Women's Network and was a valuable part of the process both for the women who made the photographs and the women who came to meet the photographers.

#### Stepping into the Flow

By Sherrie Scott

Stepping into the Flow is an individual and personal choice.

We all have something that we do, for ourselves, for our family, for our community, for our country.

The flow is what you are not doing, it is what you are doing, it is what you are not doing, it is what you are doing.

When I stepped into the flow I knew I was not alone, I was part of something bigger than myself.

The flow is what you are not doing, it is what you are doing, it is what you are not doing, it is what you are doing.

These photographs are a part of my life, they are a part of my story, they are a part of my journey.

I hope that you will see something in them, something that you can relate to, something that you can learn from.

Women's Network

Donegal

2020

Photography

Project

Support

Women's Network

Donegal

2020

Photography

Project

Support

Women's Network

Donegal

2020

Photography

Project

Support

Women's Network

Donegal

2020

Photography

Project

Support

Women's Network

Donegal

2020

Photography

Project

Support

Women's Network

Donegal

2020

Photography

Project

Support

Women's Network

Donegal

2020

Photography

Project

Support

Women's Network

Donegal

2020

Photography

Project

Support

Women's Network

Donegal

2020

Photography

Project

Support

Women's Network



borders count

registros de historias

the forest sound

the forest sound

the forest sound



# EXHIBITION

## VOLVER DE LA GUERRA

MARIO VÉLEZ

14TH APRIL - 28TH MAY

Arqueología del Color: Volver de la Guerra was an exhibition of new works by Colombian artist Mario Vélez, curated by Adriana Valderrama López. The exhibition included paintings, drawings, sculptures, and videos, and explored the relationship between natural materials and the human experience of the armed conflict in Colombia following the 2016 peace agreement. The canvases, resembling military camouflage fabrics, were transformed through the application of natural materials, creating traces reminiscent of war's impact on the land, combatants, and Colombian society. Fort Dunree was chosen as the location for the exhibition due to its historical and geographical significance, and its relationship to cultural heritage, a museum, a gallery, and a memorial. The location of the fort, on the edge of the ocean, on the periphery of Ireland and at the same time so close to the border with Northern Ireland, gives a special uniqueness to the place and a liminal quality which the curator felt could create an interesting dialogue with this body of work.

Adriana Valderrama López is a Psychologist (Universidad Pontificia Bolivariana) with a Masters in Peace Studies and Conflict Resolution who has worked as a full-time professor in the School of Law and Political

Science at the Universidad Pontificia Bolivariana. Adriana is the former director of Casa de la Memoria Museum in Medellín, Colombia and she is currently doing a PhD in the School of Arts and Humanities in the Heritage and Museum Studies Programme at the University of Ulster.

Mario Vélez is a visual artist with more than twentyfive years experience in the professional art scene, with great international and national reputation. Solo exhibitions in New York, Miami, California, Tokyo, Rome, London, Switzerland, Panama City, Mexico City, Austria, Bogotá and participation in exhibitions and projects in Valencia, PietraSanta, Berlin, Perugia, Los Angeles. His work is part of the public collections including the Contemporary Art Museum DAUM. Missouri, U.S.A., MoLAA Museum of Latin American Art, Los Angeles, CA. U.S.A. MAMBO Museum of Modern Art, Bogotá, Colombia. MAMM Museum of Modern Art, Medellin, Colombia.



# RESIDENCY

## JESSICA AUER

### MAY

Jessica Auer is a Canadian photographer, filmmaker and educator, who works from a decommissioned fish factory in Seydisfjörður, East Iceland. Her work is broadly concerned with the study of landscapes as cultural sites. Through a research-based practice, she examines our social, political and aesthetic attitudes towards place, including but not limited to – historical sites, tourist destinations, and small communities.

Working mainly with large format photography, Jessica is best known for her tableau-style photographs that examine the ways in which landscapes have been preserved, altered or commodified for sightseeing. Through these photographs, she expresses a deep concern for nature and the vulnerability of remote sites and communities when confronted with mass tourism. Her images aim to reveal the geo-political realities surrounding travel and the paradox of attempting to preserve the same landscapes that the industry often seeks to exploit.

In May 2022 Jessica took part in Artlink's residency programme, where she carried out a photographic survey of the military fort at Dunree Head. She examined the architecture of the site as a structure of surveillance, drawing theoretical parallels with the observational and voyeuristic characteristics inherent in the mediums of photography and videography. With the material collected during this visit, she put together a small series of photographs and a 10-minute video. However

the project is not complete and she hopes to return to Ireland in 2024 to bring this project to fruition.

Jessica also collaborated with Roberto Uribe Castro and curator Adriana Valderrama on documenting Roberto's Landmark installation for a publication by the University of Ulster.

Jessica received her MFA from Concordia University in Montréal, where she teaches part-time in the Photography department. Her work has been presented in the Canadian Center for Architecture, The Reykjavík Museum of Photography and the COTM photography festival in Cortona, Italy. She has been featured by Prefix Photo (Canada), Femmes Photographes (Paris), Radio Canada International, ARTE television network, and the Guardian. She has participated in residencies at the Banff Centre in Canada, The Brucebo Foundation in Gotland and Bær Art Center in Iceland.









# RESIDENCY

## ÁINE MCBRIDE

### MAY AND NOVEMBER

This residency marked Áine's first engagement with the artistic community in her native Donegal. During the residency Áine engaged with both the development of practical skills and the consideration of strands central to her sculptural practice in a broader manner. In the workshop and using the ceramic kiln she developed skills in plaster mould making, slip casting and glazing.

The path into working as an artist came after studying as a structural engineer, which indicated a way to think of architectural materials and manners of making in a specific way. This discipline relates to thinking about building in a very fragmented way, piece by piece, making individual elements that fit together to make a whole. That influenced her approach to sculpture. She has primarily had a studio based practice but more recently also works directly on site, in the gallery, using installation periods as site of production.

Áine also spent time during this residency exploring the work of Liam McCormick and visiting the churches that this architect built in Donegal. This allowed her to think about the Modernist Architectural movement in a wider context; engaging with how it impacted architecture in Ireland and how this movement was adapted to a rural context and was situated in the land and landscape of Donegal to become integrated in these

rural sites. The residency culminated in a public group visit to the nearby church Star of the Sea.

Additionally, she welcomed the opportunity to consider in depth elements relevant to her practice: the notion of place, site, home, belonging, surroundings. This formed much of the basis for a solo show at The Regional Cultural Centre in Letterkenny in April, 2023.

Recent solo and group exhibitions include From Here to There, at The Douglas Hyde Gallery; point of fold, at mother's tankstation Dublin; Feeling of Knowing at The Complex Gallery; and a commissioned body of work, and/or land, for EVA International 2021/2020. Upcoming presentations include a solo show at Void, Derry; and commissioned work for Kunstverein Aughrim.





# EXCHANGE

## INTERNATIONAL ATLANTIC RESIDENCY EXCHANGE

### MICHAEL FLAHERTY

#### MAY

For Michael Flaherty, who initially planned to visit Fort Dunree in 2020, the intervening two years of delays and postponements turned out to be quite beneficial for the development of a proposed project and his art practice as a whole. The proposed project was to involve weaving with the tide, a conceptual project which he had little idea of how to actually execute. During the wait for travel to become possible again, the artist taught himself how to crochet and weave, and built multiple iterations of looms ranging from quite rudimentary to somewhat sophisticated (but still very idiosyncratic). A serious interest in fibre arts, especially crochet, weaving and dyeing, was discovered.

His main project during the residency, which was called Tidal Weave, was a slow collaboration with the ocean to make a woven fabric. A loom was built where some of the moving parts were operated by the rising and falling of the tides. The loom was placed on the beach, and at each low tide, the artist would manually weave a number of rows, and as the tide rose, the loom would be left to be operated by the movement of the water. Over the course of a week (13 tides), a long, narrow tapestry was created. The artist embraced the element of chance with this project and was delighted to find bits of seaweed, sand, and living things inhabiting

the wool. This project was a continued exploration of the idea of "slowness" and addressed a research question that the artist had been mulling over for a number of years: How can makers (such as craftspeople) carry on in an era of ecological catastrophe?

Michael plans to continue working in this new direction, with ideas for new woven works, and will be starting a major project involving crochet and ceramics, arising from his research in Donegal.









# EXHIBITION

## LANDMARK

**ROBERTO URIBE-CASTRO**

**MAY - DECEMBER 2022**

In the *Landmark* series, which Roberto Uribe-Castro has been doing since 2016, he temporarily intervenes in buildings with white/red warning tapes that are familiar to us in places where some remodelling or infrastructure work is being done to warn us of a danger or simply to alert us about a possible eventuality. The tape functions as a signal. In a simple way this tape marks an environment, delimits a space and announces the change that is taking place, whether it is inside a building, on the sidewalk, the street or a portion of an interior space. In their presence there is an intrinsic message of temporariness, of transience.

This work adapts itself each time in a different way to each building in which it is installed. "The pattern with which I respond in each opportunity refers to some aspect of the building in an abstract way, but always seeking to create a surface that makes a reference to the topic/subject I am interested in."

LANDMARK has been exhibited as the initiator of a series of exhibitions in the Grid Cabins, Exgirlfriend Galerie Berlin and the cultural program EAT the Walls at EAT91. In May 2022 LANDMARK was installed at Neds

Point Fort, a Napoleonic fort on the banks of Lough Swilly, curated by Artlink Creative Team.

Roberto Uribe-Castro's practice focuses on how the colonial past or violent historical events persist through time in architecture and urban landscapes. With temporary/ephemeral interventions made with materials and elements present or gathered in the place where the intervention occurs, Uribe-Castro subtly alters the place where he works allowing political speeches or forgotten historical events to emerge.

Born in Bogotá in 1974, Roberto graduated as an architect from the University of the Andes and with a master's degree in spatial strategies at the Weißensee School of Arts in Berlin. He has been a finalist in international competitions. His experience as an external advisor for the Bogotá POT in 2000, a field researcher for urban studies, the work in the studio of Doris Salcedo and Mona Hatoum, in specific facilities of the site, have been of great influence in his interdisciplinary and collaborative work.

Roberto has lived in Dublin, Madrid and Amsterdam and Cartagena de Indias. He currently lives and works in Berlin.







# RESIDENCY

## ITAMAR GOV

### JUNE

Itamar Gov is an Israeli artist, who has been working between Berlin, Paris and Bologna since 2010. In recent years he has been involved in a variety of art and film initiatives, exhibitions, festivals, workshops and publications including: documenta 14, the Berlinale and the Berlin Critics' Week, collaborating with institutions such as Haus der Kulturen der Welt and Fondazione Adolfo Pini. His artistic practice deals with the intricate relations between history, ideology and aesthetics. Central to his work is the representation of different forms of personal, collective and institutional memory.

The starting point for his residency project was the multiple histories of Fort Dunree and its surroundings, highlighting the serenity and uniqueness of the place, exploring the relationship between human beings and space. The artist's idea was to address the notion of the memory of spaces – as distinct from spaces of memory. He wanted to look into questions such as "How and what exactly can spaces "remember" from the humans that acted in them? What hidden histories do they entail and how can these histories be approached? What elements in them testify to their multiple pasts? And how do traces of their former lives manifest themselves, if at all, in the present day?". He also wanted to discover micro-histories and find triggering locations in which he could realise a site-specific work, responding to the history of the space and communicating with its current life.

During his residency he became preoccupied with the very real and potent presence of the fairy in Irish consciousness. Previously, when he thought of fairies, he imagined the Hollywood version – adorable, winged creatures with magic wands, living in woodlands among pretty flowers. But he discovered this was a far cry from the Irish version of a fairy. This was the foundation for a compelling, transient installation made at the end of his month-long residency.

"For millennia, the inhabitants of rural Ireland have been fearfully respecting and keeping a safe distance from fairies. Ancient masters of the land, the fairies are fearsome and mischievous beings that today still inhabit certain territories in Ireland and manifest their presence through "fairy rings", naturally grown perfect circles of mushrooms that suddenly appear in strategic spots. Irish poet Jane Wilde – mother of Willie and Oscar Wilde – wrote in 1888 of the deadly consequences mortal men will face if they disturb or set up their homes on fairy rings, "a warning to all who would arouse the vengeance of the fairies by interfering with their ancient rights and possessions and privileges."

Fort Dunree and the military camp that surrounds it were built under British colonial rule, taking over the green hills and cliffs of Inishowen on the Northern Atlantic Ocean. Red bricks, iron chains, massive cannons and wooden huts are all part of a military compound that was never engaged in any battle or war and that today aimlessly occupies a vast area only to rust and crumble over time. As nature takes over the fort and the camp, 'Revenge of the Fairies' introduces a large fairy ring made of hundreds of clay Marasmius Oreades in one of the derelict military buildings at the fort, signalling that the fairies are slowly claiming back their territory."







# RESIDENCY

## MAURICE DOHERTY

JUNE

Maurice Doherty uses a conceptual and cross-disciplinary approach in his practice that encompasses video, installation, two-dimensional work and text-based projects. These works link disparate aesthetic, social, scientific or philosophical themes that aspire to deal with contemporary concerns and issues.

A main focus running through his practice is how science in art has the potential to generate a common identity, solidarity and mutual understanding amongst humanity, especially in such politically and socially turbulent times. Currently he is particularly drawn towards how science in art can play a very significant role in addressing and understanding our current ecological crisis, as hopefully demonstrated in recent and planned future artworks.

For the Artlink Residency he planned to produce 2-3 new conceptual artworks in collaboration with the community around Fort Dunree that take advantage of the surrounding natural beauty of the Inishowen Peninsula. He also had in mind a few preliminary ideas for quite humorous photographic works that would require a little time and experimentation. He was keen on spending a period of production at Fort Dunree, particularly as he felt it would open up new possibilities as it is in marked contrast to the cities he has worked and lived in over the last 20 years.

Maurice Doherty graduated from the University of Ulster, Belfast, N.Ireland in 1997 and completed an MFA at the Glasgow School of Art, Scotland, in 2001. In 2019, he was awarded the British Council & ACNI International Development Award. In 2018, he was selected for the Artist-In-Residence programme at AIR Antwerp, Belgium. Solo exhibitions include FAQ, Bremen, Germany (2017), Manière Noire, Berlin, Germany (2015), Beursschouwburg, Brussels, Belgium (2010), Schalter Gallery, Berlin, Germany, (2009) Glasgow International Festival of Contemporary Art, Glasgow Science Centre, Scotland (2008), Catalyst Arts, Belfast, Northern Ireland (2006), The Floating Series, Berlin, Germany (2006), Tramway, Glasgow, Scotland (2006) and Collective Gallery, Edinburgh, Scotland (2002).





# EXHIBITION

## A PORTRAIT OF LIFE THROUGH BELONGING

**BRIGID MULLIGAN**

**11TH JUNE - 24TH JULY**

Brigid Mulligan's exhibition was a profound and personal exploration of grief, loss, and memory. In her work, she examines the ways in which we attempt to hold onto the people we love after they have passed away. Mulligan's inspiration for this exhibition came from the loss of her brother twenty years ago. Through her art, she creates a space for others to reflect on their own experiences of grief and to explore the ways in which we remember those who are no longer with us.

The 21 cyanotype prints, one for each year of life, are life size. They range from a wristwatch to a motorcycle, a collection of Brigid's late brother's belongings. The family have held onto each item as if it were a part of him. The objects include the motorbike helmet and clothes he wore the night he crashed; they act as an archive of his life. The process of cyanotype has accomplished a certain sensibility that articulates what cannot be spoken.

The series of light sculptures explore what alternative shrines could look like. Assembled from recycled motorcycle indicators, when installed the work becomes an immersive experience where the viewer is plunged into a darkened space of contemplation. A Chandelier of motorcycle indicators flash sporadically giving a gentle warning sign. A motorcycle tank drilled with tiny holes is flooded with light. A wing shaped arrangement of indicators flash intensely signifying mammoth loss. The large light installation is made up of three large boxes with the body print of a fallen man subtly printed on the glass.

Originally from Longford and now based in Galway, Brigid Mulligan is an award-winning visual artist who uses a variety of creative practices and social engagement to examine the trauma of grief and the effect loss has on the anxious state. Brigid holds a Masters in Creative Practice (CCAM Galway, 2018), and a First Class Honours Degree in Fine Art Sculpture (CCAM Galway, 2009). She had two solo exhibitions in 2022 and her work has been included in numerous group shows, both nationally and internationally.







# EXHIBITION

## RESURFACE

**DEBORAH STOCKDALE**

**26TH JUNE - 25TH JULY**

Resurface by Deborah Stockdale showcased her work from the years between 2000-2015, alongside new pieces created in the Spring of 2022, as we began to emerge from isolation and the pandemic.

Deborah's textile work focuses on natural objects, both big and small, and captures the essence of the organic world in her colourfully painted, marked, and stitched pieces. From diatoms to blossoms, from minerals to tidal zones, her art explores the beauty and intricacies of the natural world.

Specializing in textiles that include quilts, banners, and wall hangings, Deborah's work has been exhibited internationally, and she has several commissioned artworks on permanent display throughout the North West. Additionally, she is a creative and technical associate of Conflict Textiles NI, a collection of textiles exploring human rights and justice.

In this new exhibition, Deborah explores natural structures and forms, using microscopic images of plants, animals, and minerals as inspiration for her artistic creations. The artwork embodies the concept "Resurface," as Deborah emerges from a period of isolation and uses her artistic talents to show the beauty of the natural world.

Deborah Stockdale is a textile artist, working in many forms of textiles and related fine art practices (painting and collage). Her work has been exhibited in Donegal at the Regional Cultural Centre, Letterkenny, and Abbey Arts Centre, Ballyshannon, in Derry at the Guildhall and Verbal Arts Centre, in Belfast at the Ulster Museum and Linen Hall Library and in various venues internationally. Stockdale's work is also in private and public collections including the Tower Museum in Derry, Donegal County Council, and the World Council of Churches in Switzerland. She is also a creative and technical associate of Conflict Textiles NI (part of Ulster University) which is an international collection of textiles dealing with human rights issues and conflict.



# PROJECT SNAPSHOT OF A COASTAL COMMUNITY

Over the course of a few months artist Geraldine Timlin, marine heritage educator William Mc Ellhinney and emerging filmmaker Ailis Cross Gorman, in association with Artlink, worked on Snapshot of a Coastal Community, with young people from the Buncrana area. The project's aim was to link generations through their relationship to the coast.

The project participants looked at how the sea and shore once played a central role in the local economy and community of Inishowen and how this has shaped our culture and identity. William led a field trip to East Inishowen with the young people to explore how Inishowen has been affected by the sea and shore through the ages, from the origins of humankind to the present'.

In the end the project focused around Desertegney, where young people attended creative workshops at Desertegney Community Center. The young people, along with their elders, were invited to share stories about their relationship to the sea and coast. This was documented by Ailis Cross Gorman who has produced a short film in collaboration with the group. Meanwhile Geraldine Timlin worked with the young people to create sea-themed haiku, lino prints and a currach like sculpture made from hazel rods and seaweed.

The project culminated in an exhibition in the Saldanha Gallery at Fort Dunree where William, Geraldine and Artlink were there to collect further stories.





# EXHIBITION

## POINT OF PERSPECTIVE

MEMBERS SHOW

30TH JULY - 28TH AUGUST

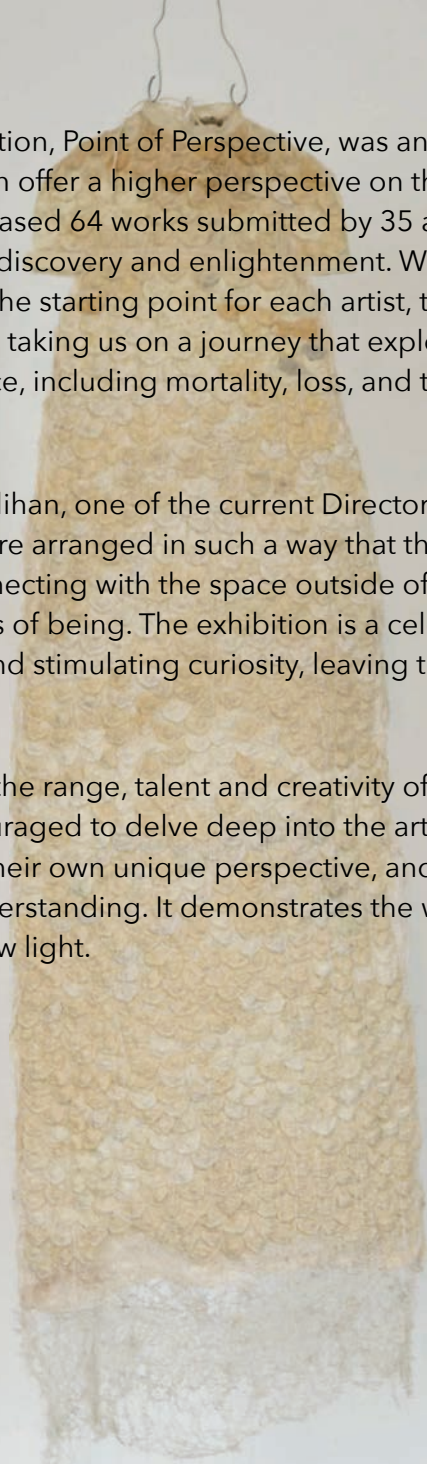
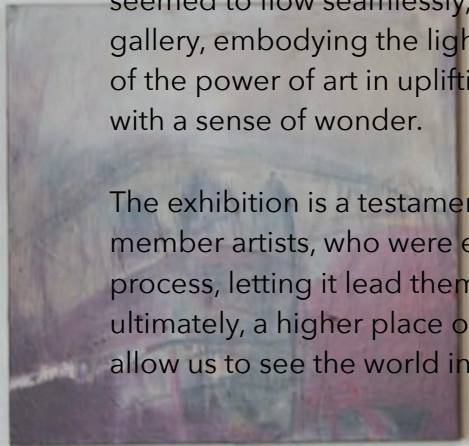




Artlink's annual members exhibition, Point of Perspective, was an impressive display of how art can offer a higher perspective on the world around us. The exhibition showcased 64 works submitted by 35 artists, each reflecting a journey of self-discovery and enlightenment. While the theme Point of Perspective was the starting point for each artist, the resulting exhibition went further, taking us on a journey that explores the essence of the human experience, including mortality, loss, and transitional states.

Expertly curated by Lindsay Merlihan, one of the current Directors at 126 Gallery, Galway, the artworks were arranged in such a way that they seemed to flow seamlessly, connecting with the space outside of the gallery, embodying the lightness of being. The exhibition is a celebration of the power of art in uplifting and stimulating curiosity, leaving the viewer with a sense of wonder.

The exhibition is a testament to the range, talent and creativity of Artlink's member artists, who were encouraged to delve deep into the art-making process, letting it lead them to their own unique perspective, and ultimately, a higher place of understanding. It demonstrates the way art can allow us to see the world in a new light.





# PUBLIC EVENTS

## ECO STREET ART

Artist Karl Porter's career as an artist began over 20 years ago, when he was a 14 year old, "tagging" his name across the city of Derry.

In summer 2022 UV Arts propose a series of 'Eco Street Art' and other environmentally friendly interventions in public spaces as part of Artlink's New Rhythm programme. Using power washing to create imagery from dirt, he transformed the surfaces of a number of the concrete foundations and walls at Fort Dunree, Ned's Point and pavements and walls in the town of Buncrana. Water based Chalk pigments were used to create artworks on grassed areas in Swan Park. Huge abstract patterns were drawn on the beach at Buncrana, Linsfort and Culdaff. In addition Karl ran community workshops sharing his practice with the public.

The project allowed Karl to extend his practice and experiment with new methods of working and new eco-friendly processes.









# RESIDENCY

## INTERNATIONAL ATLANTIC RESIDENCY EXCHANGE

## SUSAN FURNEAUX

### AUGUST

Susan Furneaux is an award-winning artist and craft consultant who merges technical skill with solid design concepts. She specialises in natural dyes and fibres, teaching and exhibiting her work globally. She currently instructs at the College of the North Atlantic's Textile & Apparel Design, focusing on finely crafted objects that reflect her connection to her environment.

Intimacy with materials in process and place is the foundation of her work. She nurtures, forages and processes her materials; her art and homesteading lifestyle are inseparable. The seasons, the ebbs and flows of nature are present in the materials. The practice is a ritual of connection and integration with her environment where the cycle of life and death are ever present. This work is reflective of her ancestors' tradition of 'making do', skilled makers who created beautiful work with what was close by.

"In the past few years, the focus of my work has shifted. I have always worked with natural fibre, but more recently have been inspired by the fibre found at my feet, the fibre that enamoured me as a child and captivated me in the world of textiles. Dandelions, cottonwood, linden and birch are where it all started. I now want to create with local natural fibre using traditional methods and explore the subtiles of colour found

in the materials themselves. I want to move away from natural dyes and revel in the natural colours of my materials.

My time in Ireland allowed me the time to study these things. Connecting with Irish knowledge keepers, I learned methods of working with textile materials in traditional ways. I found inspiration in the geophysical, historical, social and cultural similarities between our two islands that share their shores with the North Atlantic. The residency gave me time to think, ponder and experiment towards my new direction; my newest work is reflective of the material and techniques learned during my time at Artlink".

During her residency Susan created small-scale textile pieces, a tribute to the Newfoundlanders who perished in the sinking of the Laurentic in 1917. Several of these pieces were included in Earth Rising, at IMMA in October 2022.









# EXCHANGE

## INTERNATIONAL ATLANTIC RESIDENCY EXCHANGE

### GERALDINE TIMLIN & PEDRO REBELO

#### OCTOBER

Geraldine Timlin and Pedro Rebelo, took part in the International Atlantic Residency Exchange at Eastern Edge Gallery in August 2022. Geraldine is a visual artist living and working in Donegal. Her work explores aspects of Deep Ecology and our interconnectedness with the natural environment. She uses photography and film to document the creative investigation of environments and space, creating a visual narrative of place and being. Pedro Rebelo is a composer, sound artist and performer working across socially engaged sonic arts, immersive listening experiences and chamber music with electronics. He is Professor of Sonic Arts and Director of the Sonic Arts Research Centre at Queen's University, Belfast.

Both artists have been collaborating since 2020 on work across different media with a focus on image and sound installation. The artists' work often interrogates our relationship with nature through experiential and immersive environments. Both artists led and worked extensively on socially engaged art projects nationally and internationally.

Over the course of the month-long residency, the artists traveled throughout Newfoundland, capturing soundscapes, landscapes, stories and experiences based on a project titled *Shaped by the Sea* exploring commonalities between Ireland and Newfoundland through lives shaped by the edges of the Atlantic Ocean, representing separation and connection. They became aware of the rootedness of the people, their relationship to the land, sea, sky and the sense of connection with those who came before.

Through research, conversations and exploration of the natural environment along the Newfoundland coastline, Geraldine and Pedro met individuals and communities whose lives have been directly affected by land and sea. They worked with participants including fishermen in Ferryland and Branch, artists in Port Union and St John's, foragers, business owners in Quidi Vidi, and Inuit throat singers, in capturing their unique connection to place and the shared ocean.

The artists were struck by the strong preservation of Irish culture, language and traditions that have been maintained in Newfoundland for nearly 300 years. The marked similarities in physical appearance, accent and common expressions, preserved songs, and the almost identical landscape was a unique experience they still reflect on.

They are continuing the Irish section of the project along the west coast of Ireland, working on creating an interwoven audio and video installation for completion and distribution in both locations in 2024.







# EXHIBITION

## THE SEED THAT STOPS THE HEART

**LOUISE SPOKES**

**3RD SEPT - 2ND OCT**

Louise Spokes, a Buncrana native now based in Glasgow, showcased her first solo exhibition entitled 'The Seed That Stops The Heart'. The exhibition featured drawings on glass and paper exploring the themes of deadly poisonous plants and their associations with folklore and historical stories of love and betrayal. During lockdowns and the Covid-19 pandemic, Louise drew inspiration to bring nature indoors. The artwork includes delicate botanical illustrations alongside images of blisters and burns, highlighting the contrasts between life-saving and deadly aspects of the featured plants. Louise says that there are many fascinating stories related to poisonous plants, full of intrigue, love, betrayal, and the pursuit of power.

Louise Spokes is a visual artist and marketing manager based in Glasgow. She earned an MA in Arts Policy and Practice, Huston School of Film & Digital Media, Galway, BA (Hons) in Fine and Applied Art from the University of Ulster, Belfast and HND Fine Art, North West Regional College, Derry. She is a former member of Engage Art Studios and

Director and Chairperson of 126 Artist-Run Gallery (2015 - 2017). She has worked extensively in the arts in other management, curatorial, and programme coordination roles including Project Manager for the ANTIPORTA project by Chris Briffa Architects as part of TIME, SPACE, EXISTANCE at the Venice Architecture Biennale and Spazju Kreattiv, Malta, 2018. Louise has exhibited across Ireland and NI, including PS2, Belfast, 126 Artist-Run Gallery, Galway, The Burren College of Art, Ballyvaughan, The Regional Cultural Centre, Letterkenny, and The Glebe Gallery, Churchill, and Creative Village Arts, Derry.







# RESIDENCY

## INTERNATIONAL ATLANTIC RESIDENCY EXCHANGE

### KYM GREELEY

#### SEPTEMBER

Kym Greeley lives in St. John's, Newfoundland, where she maintains her studio art practice. As a member of St. Michael's Printshop, she both teaches screenprinting and produces her serigraph original prints. With process as a priority in her work, she uses the landscape, architecture and culture of Newfoundland to create paintings, screenprints and video work. Her work has been exhibited in publicly-funded, artist-run and commercial galleries. Collections featuring her work include the Canada Council Art Bank, Global Affairs Canada, The Rooms Provincial Art Gallery, the Art Gallery of Nova Scotia and the Newfoundland Provincial Art Bank Collection. She is currently represented by Christina Parker Gallery in St. John's.

"Through the International Atlantic Residency Exchange between Eastern Edge Gallery and Artlink, I traveled to the North West of Ireland to stay and create artwork for one month in September 2022. The experience was amazing. I stayed in Donegal in the town of Buncrana and worked at Fort Dunree. Exploring the area, I decided to focus my attention on the abandoned and dilapidated bunkers and forts on site. I made drawn and screen-printed portraits of the new inhabitants of the buildings - the Fireweed, Bracken Ferns and every creeping Ivy.

Artlink connected me with so many local artists. Most importantly, the artist-run print centre - The Derry Print Workshop, hosted me so I could screenprint in their studio to create a series of editions and produce the Bracken Fern Wallpaper. The wallpaper was installed in two different bunkers along with the drawings and editions".









# ENGAGEMENT

# INISHOWEN WALKING

# FESTIVAL

16TH - 25TH SEPTEMBER

The Inishowen Walking Festival was a collaborative project in partnership with Inishowen Social Enterprise Network, celebrating the outdoors, with a focus on health, wellbeing and culture. It combined community and cultural experiences with fitness and shared learning opportunities engaging with local experts. The walks focused on specific places of interest across the Inishowen Peninsula. Artlink organised three walks around Dunree.

The festival involved Sarah Duffy, who served as artist in residence in 2021, and her efforts to unveil the historical and geological significance of the long-forgotten Cill Ard monastic site. To this end, she led a walk to the site, where she launched a sound piece, a musical composition that brings to life the hidden archaeological and geological world of the area. During the walk, Duffy also introduced new signage and a map/card containing information on the sound piece. The map/card featured a QR code that the public can use to listen to the audio work virtually. The artist's primary objective was to explore how we can detect and uncover the hidden and complex histories of the spaces we inhabit. Furthermore, Duffy premiered her performance film, titled *The House Always Wins*, which she developed during her residency.

Glór Inis Eoghain is a community group formed to promote the use of Irish in the Inishowen peninsula. Glór accompanied participants on a walk and talk as Gaeilge for all those interested in hearing and using Irish. The walk took in the Bulba Way and Fox's Rock Trail.

The most strenuous walk in Artlink's programme was a 12 km hike led by walking expert Sharon Porter. This varied route included an old monastic site, turf cutting, windmills, a lough and the flora and fauna of the bogland, stopping on the summit of Aghaweel Hill giving panoramic views of Lough Swilly and West Donegal. Throughout the walk Sharon shared her extensive knowledge of local lore.





# EVENTS

## CILL ARD

**SARAH DUFFY**

**16TH SEPTEMBER**

Cill Ard is a musical composition that brings to life the hidden archaeological and geological world of the long-neglected historical, monastic site of Cill Ard.

In 2021, Sarah Duffy was an International artist-in-residence at Artlink, Fort Dunree. Duffy was keen to investigate how we can detect and reveal the hidden and layered histories of the spaces we inhabit, leading her to a fortuitous meeting with local artist and historian, John McCarron.

As a member of The West Inishowen History and Heritage Society, John McCarron works alongside Archaeologist and society chairman, John Hegarty. In 2021, Hegarty engaged geophysics organisation, Earthsound, to undertake an electromagnetic survey of a field he believed to be the historical site, Cill Ard. For decades, the site's true identity has remained obscure, but this survey established that it contains the foundations of a significant medieval monastery that was likely attacked by Viking invaders.

On discussing the process of making the music, Duffy commented 'I took the electromagnetic data and converted it into musical notes using a process called Data Sonification. This technique is used as an alternative to data imaging, allowing scientists to pick out nuances in the data that

cannot reveal themselves in an image. The stark differences in low and high notes throughout the composition represent the changes in soil resistivity as the geophysical instrument moves across the field - the high notes indicating areas of dense soil and stone, and the low notes revealing ditches and loosely packed soil'

For both the 2021 and 2022 Inishowen Walking Festival, Duffy led a group on a trail to listen to the music in situ, from Artlink, Fort Dunree, to a viewing point/listening point overlooking the field of Cill Ard. In 2022, Duffy also launched a map/postcard publication that allows visitors to Fort Dunree to follow the trail to the viewing/listening point in their own time. The music can be downloaded via a QR code on the postcard and then visitors can follow the map to experience this site-specific musical piece for themselves. There is also now a sign located at this viewing/listening point that allows passers-by to learn about the project and download the music directly via QR code.



# PROJECT

## STORIES OF CHANGE

### WITH ESSENTIALLY ECO AND WILD STRANDS

24TH SEPTEMBER

Stories of Change was a three-part community-led program which used food to reach new audiences, stories that deepen participation and visual art to spark imagination.

Stories of Change creatively engaged the community on the topic of climate action via the sharing of food, a foolproof way to engage new audiences; via stories, the well known knitter of communities; and used visual art as a way to promote feasible, local, and practical solutions to the climate crisis.

The project, devised by Essentially Eco and Wild Strands, involved four counties (Donegal, Kerry, Clare, Galway) with five partners (BurrenBeo Trust, Leave No Trace, Climate Ambassadors, Artlink, and SeaSynergy). Their mission was to bring the community together to showcase local solutions to the climate crisis through photo exhibitions showing solutions inspired by local climate legends, environmental workshops led by local groups, and communal feasting to promote and support local produce. Stories of Change was designed to flip the script and change the dystopian climate change narrative away from doom and destruction, to bring stories and solutions to the table as a catalyst to inspire real climate action.



Leave No Trace is an Outdoor Ethics education programme designed to promote and inspire responsible outdoor recreation through education, research, and partnerships.

Burrenbeo Trust is dedicated to connecting all of us to our places and our role in caring for them.

The Climate Ambassador programme is Ireland's first ever initiative to train and support individuals taking action on climate change.

Sea Synergy is a Marine Awareness, Research and Activity Centre that offers a variety of meaningful activities, workshops, and adventures that empower all ages.







# PUBLIC EVENTS

## BBEYOND

7TH SEPTEMBER

SANDRA CORRIGAN BREATHNACH - HILARY GILLIGAN - KATRINA SHEENA SMYTH - NINA QUIGLEY - REBECCA STRAIN - JAMES KING - CAROLINE MURPHY

In September 2022 Artlink invited Belfast based performance art organisation Bbeyond to host one of their 'monthly meetings' at Neds Point Fort, Buncrana to respond to the installation Landmark by Roberto Uribe Castro.

Bbeyond, a non-profit organisation supported by the Arts Council of Northern Ireland Lottery Fund, is committed to promoting the practice of performance art in Northern Ireland and further afield. Their aim is to raise consciousness of live/performance art as being integral to the world in and around us, inspiring reflection and enriching lived experience. They host artists of international standing throughout the performance art world and encourage newer artists to experience performance art practices for themselves. Bbeyond encourages greater access to and appreciation of this visually based art form, through facilitating modes of active private/public participation, allowing people from all sectors of society to experience and enjoy performance art directly.

Bbeyond's ethos is two-fold; one based on the physical/literal journey, the other on a more elusive journeying through the process of being and becoming. The literal, overtly physical aspect predominantly deals with the location of Belfast. By hosting international artists to present work alongside local artists, the knowledge and consciousness of performance art grows through increased exposure to other modes of practice, opening up possibilities of wider connections. The liminal nature deals with transition, transformation and transcendence.

Photography by Jordan Hutchings



# EXHIBITION

## PROCLAMATION

**MICHAEL FRIEL**

**3RD SEPTEMBER - 2ND OCTOBER**

Micheal Friel is an emerging artist who recently relocated to Donegal, his parents home-place, after working in Glasgow for 30 years as a psychiatric nurse. He is now embarking on a journey of reconnecting with people, place and portraiture.

He attended Glasgow School of Art from an early age specialising in life drawing, then Glasgow College of Building and Printing where he studied photography.

Michael says "The human face fascinates me. In my 30 years working with people as a nurse I saw the diverse range of emotions expressed in a moment's glance. In this body of work I have sought out photographic portraits of the seven signatories of the Proclamation of the Irish Republic; Thomas J. Clarke, Seán Mac Diarmada, Thomas MacDonagh, P. H. Pearse, Éamonn Ceannt, James Connolly and Joseph Plunkett which I have drawn in pastel monochrome.

My work is representational. I love drawing and use mainly dry mediums; graphite and pastels, which allow me to work fast and produce finished portraits."





# EXHIBITION

## EMERGING FORMS

**AODAN MCCARDLE**

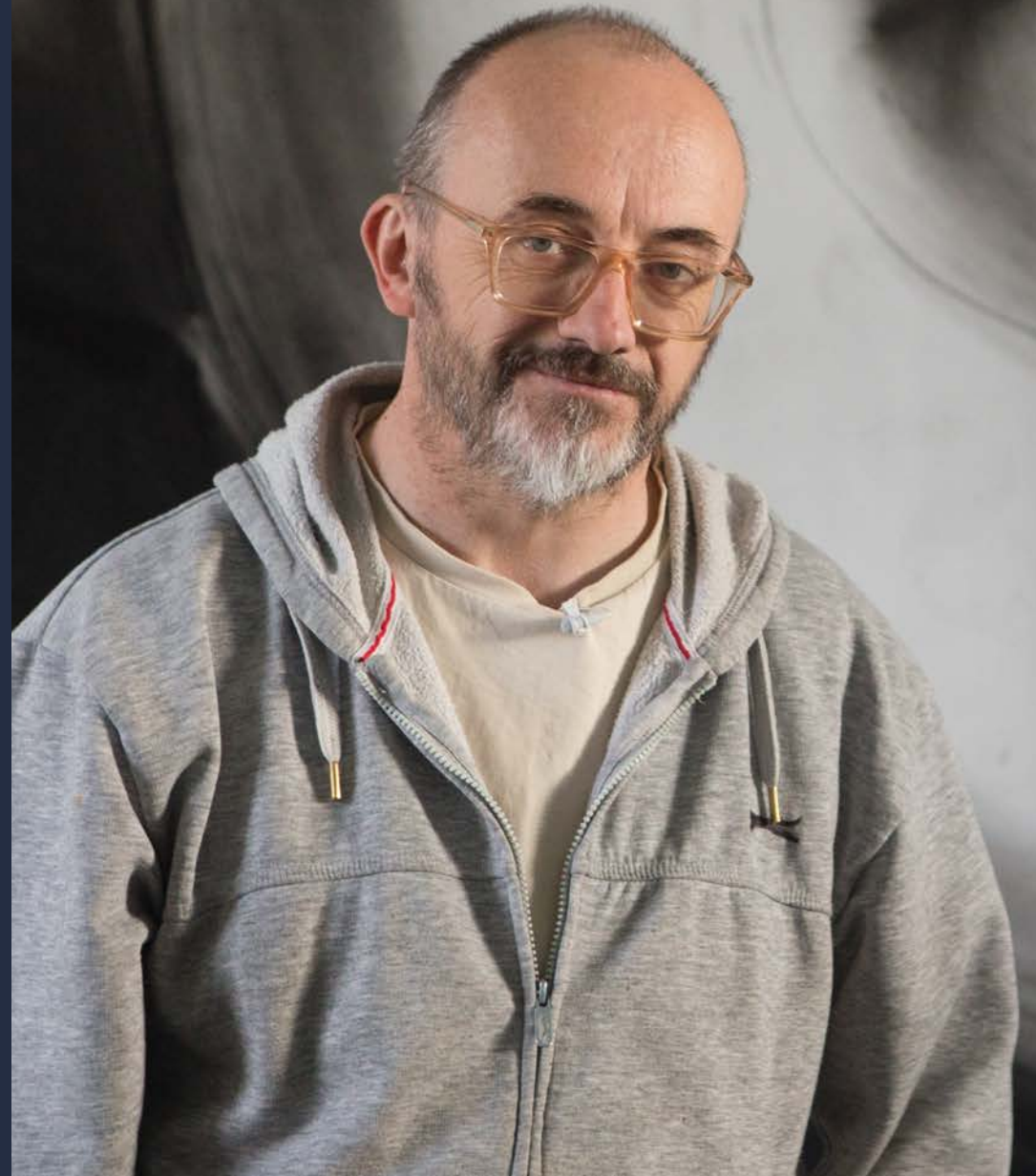
**8TH OCTOBER - 7TH NOVEMBER**

Emerging Forms presents a series of drawings using still life objects as the catalyst for abstracted forms. The show had a strong sense of studio and becoming, with drawings ranging in size from small notebook sketches to large wall-sized pieces. Some of the drawings were created in the gallery during the exhibition, adding an element of live art.

The objects used in the drawings were plastic containers and rope, both of which have an inherent usefulness but also represent the throwaway culture of modern living. The complexity and simplicity of these objects almost defeat the action of the drawing, as they challenge their usefulness with temporary stasis between uses. The repetition and disruption of the rope and the similarities and differences between the plastic containers create a visual interest that allows for abstraction and interpretation.

McCardle's use of these objects as a starting point for his drawings creates a sense of contemplation and reflection on the everyday objects that we often take for granted. He invites the viewer to see these objects in a new light, as users of space and form, and to appreciate their visual qualities beyond their utilitarian purposes.

Aodán's current practice is improvised performance/writing/drawing. His PhD is on 'Action as Articulation of the Contemporary Poem' though physicality and doubt are the site of meaning and the stance respectively where the action operates. He was a member of the anti-performance group LUC, London Under Construction and the Collaborative/Improvisational Performance group Cuislí.









# ENGAGEMENT

## OVERWINTERING

OCTOBER - DECEMBER

Overwintering was a series of workshops that invited artists and makers to share their creativity with others with the view to picking up some inspiration to keep us going over the long dark winter months.

Workshops included mindful drawing with Hanna Pidkaliuk, natural dying and Shibori with Martha McCulloch, printmaking with Grainne McMenamin, spinning with Ruth McCartney, visible mending with Deborah Stockdale and watercolor techniques with Heather McLaughlin.

This project grew from the Compassionate Culture Network with the Irish Hospice Foundation which Artlink developed in 2021/2022, creating nurturing, supportive spaces to help in dealing with grief and loss. In this instance we were looking more generally at the arts as a means to foster safe, nurturing spaces for wellbeing and good mental health.

The workshops took place at St Mary's Hall in the heart of Buncrana, facilitating easy access for most of the community.





# PUBLIC EVENTS

## IN THE MAKING

19TH NOVEMBER

In the Making was a conscious departure from the traditional Christmas Craft Fair. The event, which was held at Fort Dunree, aimed to celebrate the artistic process and the exceptional skills of local artists and crafts makers. Eleven talented individuals participated in the event, each showcasing their unique creations and sharing their expert skills with the public.

One of the highlights of the event was the diverse range of artists and craft makers that participated. Audrey Doherty, an accomplished milliner, demonstrated the intricate techniques required to create exquisite hats and headpieces. Anna Stainsby, an up-cycling expert, showcased her innovative approach to recycling old items into new creations. Deborah Stockdale shared her impressive embroidery skills, while Ruth McCartney demonstrated the art of spinning. Grainne McMenamin supported the public to make their own prints, while Paul Campbell displayed his exceptional woodworking skills. Fiona Higgins shared her knowledge of the ancient art of batik, while Claire Harkin demonstrated the art of weaving. Matthew Porter showcased his ceramics and demonstrated monoprinting, and Mary Crowley shared her exceptional watercolour skills. Josephine Kelly shared her deep knowledge and skill in oil painting techniques while Tim Stampton demonstrated his printmaking abilities, creating stunning, detailed prints before the eyes of the public.





# PUBLIC EVENTS

## WORDS PRESENCE TRACES

PETER O'DOHERTY AND JAMES KING

27TH NOVEMBER

This event was the second iteration of a performance resulting from a residency at Art Arcadia in Derry in November 2021.

James King grew up in Larne, Co. Antrim and has lived in Derry for forty years. Since retiring from his post as Lecturer in Theatre Studies at the University of Ulster in 2004 King has developed his career as performance artist and sound poet. More recently he has been incorporating sound poetry and vocal improvisation in his performances. Much of King's work is organic, spontaneous and site specific.

Peter O'Doherty is an Irish composer and sound artist. He makes work for and with humans, performers, computers and (sound) objects. His work often deals with memory, time, language and the relationship between text, code and gesture.





# PUBLIC EVENTS

## LEGO EXHIBITION

**CURATED BY LEMMY**

**3RD DECEMBER**

In Spring 2022 Lemmy, age 6, proposed that Artlink host a Lego show and even went on a research trip to Manchester Discovery Centre in the summer to get ideas.

He wanted everyone to have a place to exhibit their best lego and invited the public to display their creations. He gathered all of his Lego and Duplo bricks together for a making area so visitors could create pieces on site.

The exhibition included a Lego animation station where visitors could create stop motion animation from their creations and a Lego printing station where lego dots could be used to print patterns. There was also a Lego character design and a yellow Lego brick cake.

Lemmy set up a treasure hunt where participants had to locate twelve special lego figures throughout the show. The prize for finding all of the figures was a hand cast chocolate Lego person.







# PUBLIC EVENTS

## LUXE: NEW RHYTHMS

LUXE worked throughout 2022 looking at the changing points in the agrarian/solar/Celtic calendar and finding appropriate ways to mark them with landscape theatre and spectacle. This was a process of trial and testing both of the art and the approach of the public to the work.

Working with Artlink very directly informed two other LUXE projects in 2022 and two successful funding applications for making new work in 2023. This engagement allowed LUXE to focus on the seasonal and ritual aspects of their annual program, a focus that has presented interesting challenges and opened new opportunities.

### Spring Equinox | Malin

A piece of work that set the tone for the following seasons. Finding depth within the work. Working with visual Artists Locky Morris and Aidan Crotty as well as performance artists Juszina Hermann and Zoja Dravai we set up, and burned a series of fire horses at both sunrise and sunset on beaches to the East of Malin head (at dawn) and to the West (at Sunset). This work was photographed - not made for a live audience.











### Summer Solstice | Ned's Point

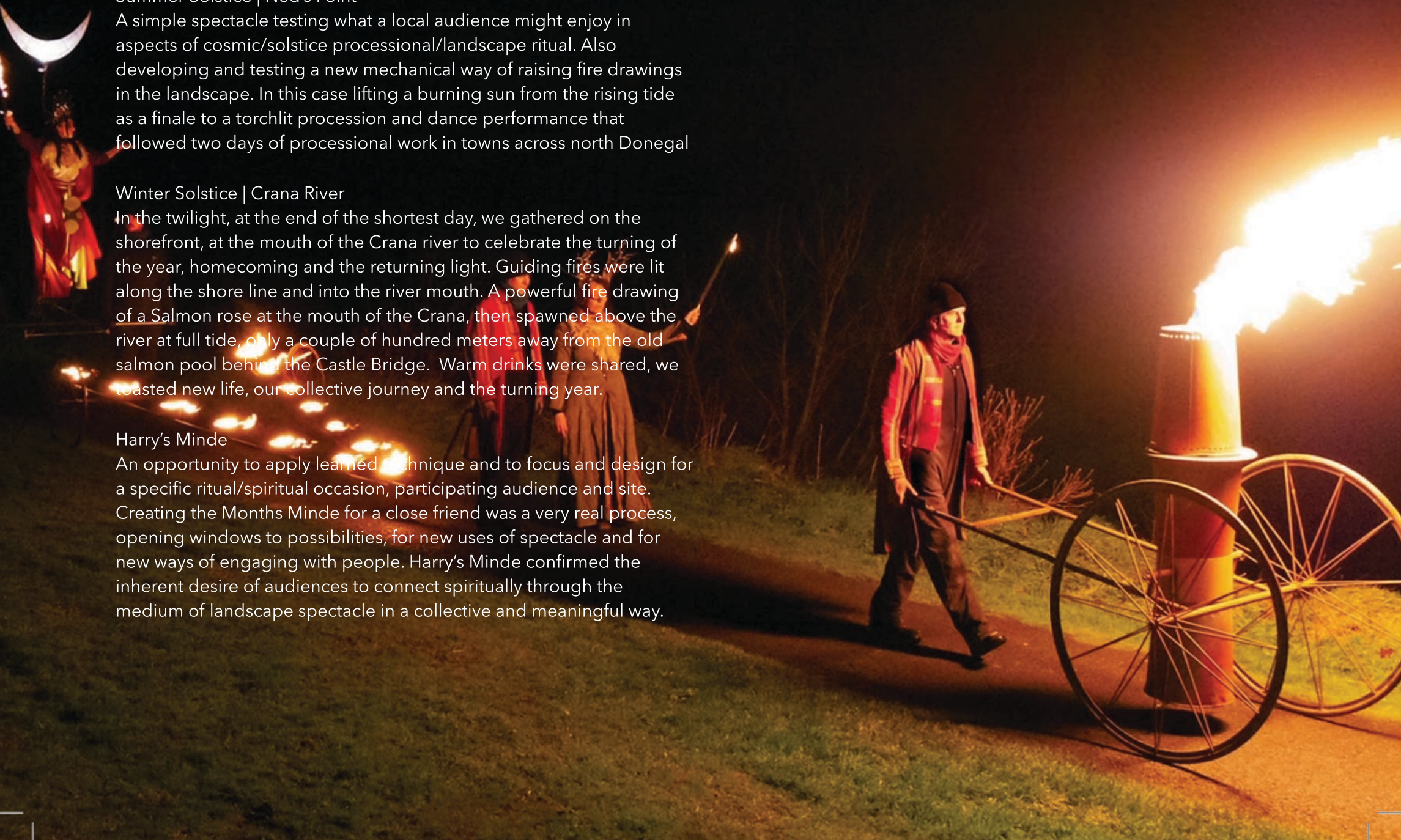
A simple spectacle testing what a local audience might enjoy in aspects of cosmic/solstice processional/landscape ritual. Also developing and testing a new mechanical way of raising fire drawings in the landscape. In this case lifting a burning sun from the rising tide as a finale to a torchlit procession and dance performance that followed two days of processional work in towns across north Donegal

### Winter Solstice | Crana River

In the twilight, at the end of the shortest day, we gathered on the shorefront, at the mouth of the Crana river to celebrate the turning of the year, homecoming and the returning light. Guiding fires were lit along the shore line and into the river mouth. A powerful fire drawing of a Salmon rose at the mouth of the Crana, then spawned above the river at full tide, only a couple of hundred meters away from the old salmon pool behind the Castle Bridge. Warm drinks were shared, we toasted new life, our collective journey and the turning year.

### Harry's Minde

An opportunity to apply learned technique and to focus and design for a specific ritual/spiritual occasion, participating audience and site. Creating the Months Minde for a close friend was a very real process, opening windows to possibilities, for new uses of spectacle and for new ways of engaging with people. Harry's Minde confirmed the inherent desire of audiences to connect spiritually through the medium of landscape spectacle in a collective and meaningful way.





# AIMS | VISION | MISSION

Artlink is an artist-led organisation, formed in 1992, run by a team of professional artists working from studios at the historic and inspiring location of Fort Dunree, Inishowen, County Donegal. It exists to support the ambitions of local, national and international artists at all stages of their professional career. Artlink makes a valuable contribution towards the creative development and wellbeing of the local community and helps build a strong sustainable culture and economy in the region. This is achieved through a programme of regional, national and international exchanges and residencies, exhibitions, practical creative workshops and participatory community events. In an area packed with ancient history and breathtaking scenery, Artlink connects and inspires people to produce creative projects uniquely rooted in 'place' and inspired by this rural, coastal context.

## OUR VISION

Our vision is of a time when rural areas in Ireland will have a vibrant, sustainable art community, confident in the uniqueness of its voice.

## OUR MISSION

Artlink's mission is to provide the expertise and physical resources to build a strong sustainable visual arts culture and contribute to the artistic and economic ecology of the North West of Ireland.

## OUR AIMS

- To create opportunities for Irish and international emerging and established visual artists to develop their creativity and art practice.
- To create a vibrant, committed and rigorous visual art community locally.
- To creatively empower the local community and widen participation in the visual arts.
- To increase public knowledge and appreciation of contemporary art.
- To explore the contribution of contemporary visual arts in the social and economic development of rural places.
- To develop innovative art projects rooted in this rural, coastal context.
- To build national and international connections for the arts in the North West of Ireland.
- To make new opportunities for people to be involved in the arts as audiences and active participants.
- To make Fort Dunree a focal point of artistic interest along the Wild Atlantic Way.
- To develop premises at Dunree as a fully accessible arts facility/resource for the population of Inishowen and the wider region.
- To ensure long term sustainability for Artlink and all its activities



# BOARD MEMBERS

## **Mark Hill**

Mark Hill is a sculptor working in the public domain. He is Co-Director of LUXE - Landscape Theatre Company [www.luxe.ie](http://www.luxe.ie). He holds a BA (Hons) Degree in Fine Art from Liverpool Art College. His career in Arts and Theatre spans over 30 years. Mark enjoys long term creative relationships with artists, arts organisations, festivals and funding bodies across Ireland and Internationally. As a dedicated community artist his work engages and is enjoyed on all levels.

## **Martin McGinley**

Music Development Manager at Donegal Music Education Partnership, part of the Donegal Education and Training Board. Former BBC NI television reporter, former editor of the Derry Journal and Donegal Democrat. Well-known traditional fiddler.

## **Esther Alleyne**

Arts and Culture Facilities Officer at Roe Valley Arts Centre Esther was Arts Business Development Manager at Loaf Pottery in Crawfordsburn and has worked with various regional and international organisations including Echo Echo Dance Theatre Company for 6 years as well as Young at Art, Gary Rowntree Dance and LUXe

## **Sean Beattie**

Sean Beattie is a research historian, editor of Donegal Annual, Macklin Festival and Colgan Heritage Weekend committee member, chairman of Ulster Local History Trust, author of a number of books on Donegal history, Ph.D. specialising in Congested Districts Board. .Worked as a teacher of English, History and French in St. Joseph's Secondary School, Derry, subsequently at Ballyfermot Vocational School, Dublin. In 2013 he was awarded an honorary degree by the National University of Ireland, Galway.

## **Sharon Porter**

Sharon is an entrepreneur, educator and enterprise development consultant. She has worked with the community sector and commercial start-ups as a consultant, trainer and mentor. While employed at Ulster University, Sharon championed cross-campus innovation and entrepreneurship education within diverse subject areas and lectured in Arts Entrepreneurship. She recently set-up Solas Ireland Walks and Hikes and is a qualified hiking and a Regional Fáilte Ireland Tour Guide.

## **Jack Murray**

Jack Murray lives in Buncrana and has been an elected member of Donegal County Council since 2011. He served as Chairperson of the Inishowen Municipal District from 2017 - 2018 and as Cathaoirleach of Donegal County Council from 2021 - 2022. He is passionate about supporting arts and culture locally and sees the local authority as a key vehicle for assisting in its development.







8

SOLO EXHIBITIONS

1

SEMINAR

103,000

EVENT ATTENDEES

3

GROUP EXHIBITIONS

3

PROJECTS

12

COURSES

15

TALKS

15

EVENTS

2

OUTDOOR EXHIBITIONS

10

RESIDENCIES





ARTLINK, FORT DUNREE, LINSFORT, INISHOWEN, COUNTY DONEGAL | [WWW.ARTLINK.IE](http://WWW.ARTLINK.IE) | [INFO@ARTLINK.IE](mailto:INFO@ARTLINK.IE) | 083 869 6513